



US Army Corps of Engineers Saltwater Wedge Map (date of prediction 9/18/2024)

**INCIDENT OVERVIEW**

**WebEOC Incident: 24-031 Saltwater Intrusion - Region 1 – Aug**

**Activation Level:** Crisis Action Team

**USACE Saltwater Toe of Wedge Location and date:**

- Current estimated location: River Mile 49.2 (9/18/2024)
- 10-day Prediction: River Mile 62.8
- 28-day Prediction: River Mile 70.5

**INCIDENT OBJECTIVES**

1. Support water supply needs of citizens
2. Coordinate and manage all available resources
3. Maintain ongoing communication to keep public and stakeholders informed
4. Continue to synchronize public and private efforts to mitigate incident

**OPERATIONAL RHYTHM**

**Parish and ESFs SITREPS Due:** Wednesdays at 1200  
**SITREP Published:** Wednesdays at 1400

**WEATHER**

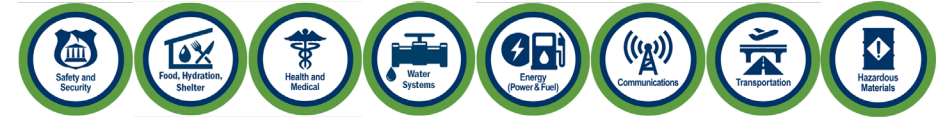
- Dry to drought across most of the Mississippi drainage-with most critical shortages in the Ohio, Tennessee, and Red River basins
- 7 day rainfall totals over the Ohio Basin will be ½” inch or less
- Late September to early October will be on dry side. Outlook for the rest of fall will be on the dry side

**Trend Legend:**

- ↑ Improvement Noted
- ↓ Worsening Situation
- No Change

**Lifeline Color Description:**

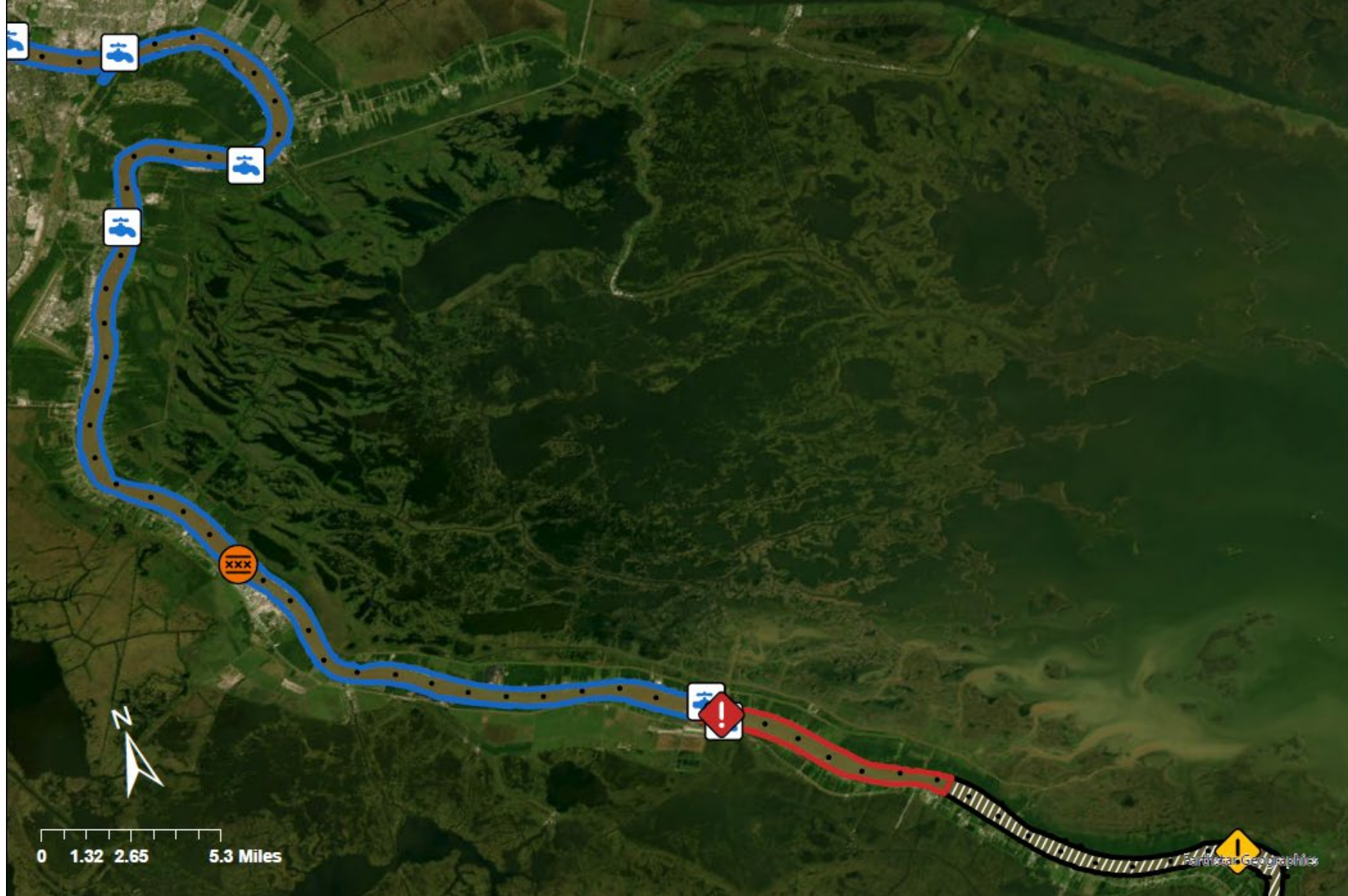
- Green (GN)** – Minor disruptions or limitations to the community
- Yellow (YL)** – Disruptions affect delivery of services and resources
- Red (RD)** – Severe challenges and obstacles hindering essential services
- Grey (GR)** – Unknown status



Lifelines Summary	
Water Systems ↓	<p><b><u>LDH Engineering:</u></b></p> <ul style="list-style-type: none"> <li>Working with the Parish, State and Federal partners to facilitate permitting of the reverse osmosis treatment systems and barging operations</li> <li>Conducting water testing operations for ROPU units</li> </ul> <p><b><u>Plaquemines</u></b></p> <ul style="list-style-type: none"> <li>See slide on page 4 for predicted impact dates of water systems</li> <li><b>Boothville:</b> Chlorides rose steeply at Boothville and continue to trend upward</li> <li>Boothville WTP continues to blend water to maintain acceptable levels</li> <li>Chlorides are fluctuating at Port Sulphur WTP</li> <li>ROPU is working; 1 ROPU at Port Sulphur to be installed</li> <li>Reservoir tanks at Port Sulphur were tested on 9/17 to facilitate Clear Well repair plans</li> <li>Working with USACE for water model</li> </ul> <p><b><u>St. Bernard</u></b></p> <ul style="list-style-type: none"> <li>RFP for barge has been submitted</li> </ul> <p><b><u>Jefferson</u></b></p> <ul style="list-style-type: none"> <li>Monitoring the situation from week to week</li> </ul> <p><b><u>Orleans</u></b></p> <ul style="list-style-type: none"> <li>Monitoring the situation from week to week</li> </ul>

Lifelines Summary	
Energy →	<p><b><u>Power:</u></b></p> <ul style="list-style-type: none"> <li>No reports of incidents</li> </ul>
Safety and Security →	<ul style="list-style-type: none"> <li>No reports of incidents</li> </ul>
Food, Hydration, Shelter →	<ul style="list-style-type: none"> <li>No water distribution points related to saltwater intrusion at this time</li> </ul>
Health and Medical →	<p><b><u>ESF 8</u></b></p> <ul style="list-style-type: none"> <li>Critical infrastructure intact with no disruption of services. Monitoring the situation at this time.</li> </ul>
Cyber/Comms →	<ul style="list-style-type: none"> <li>No reports of incidents</li> </ul>
HazMat →	<ul style="list-style-type: none"> <li>No reports of incidents</li> </ul>
Transportation →	<ul style="list-style-type: none"> <li>No reports of incidents</li> </ul>

# Mississippi River Saltwater Intrusion WebEOC Incident 24-031



## Points of Interest

-  Barrier
-  Saltwater Intrusion (Crown)
-  Saltwater Intrusion (Toe)
-  Water Intake Point
-  River Mile Markers

## Forecast Inundation Date

-  No Forecast
-  October 7, 2024
-  September 18, 2024



This map was developed by the Louisiana Governor's Office of Homeland Security & Emergency Preparedness using data from LDH, USACE, and USGS.

Contact:  
Austin Dixon, Louisiana GOHSEP  
austin.dixon@la.gov

Last Updated:  
9/18/2024 1:38 PM



# SALTWATER WEDGE TIMELINE

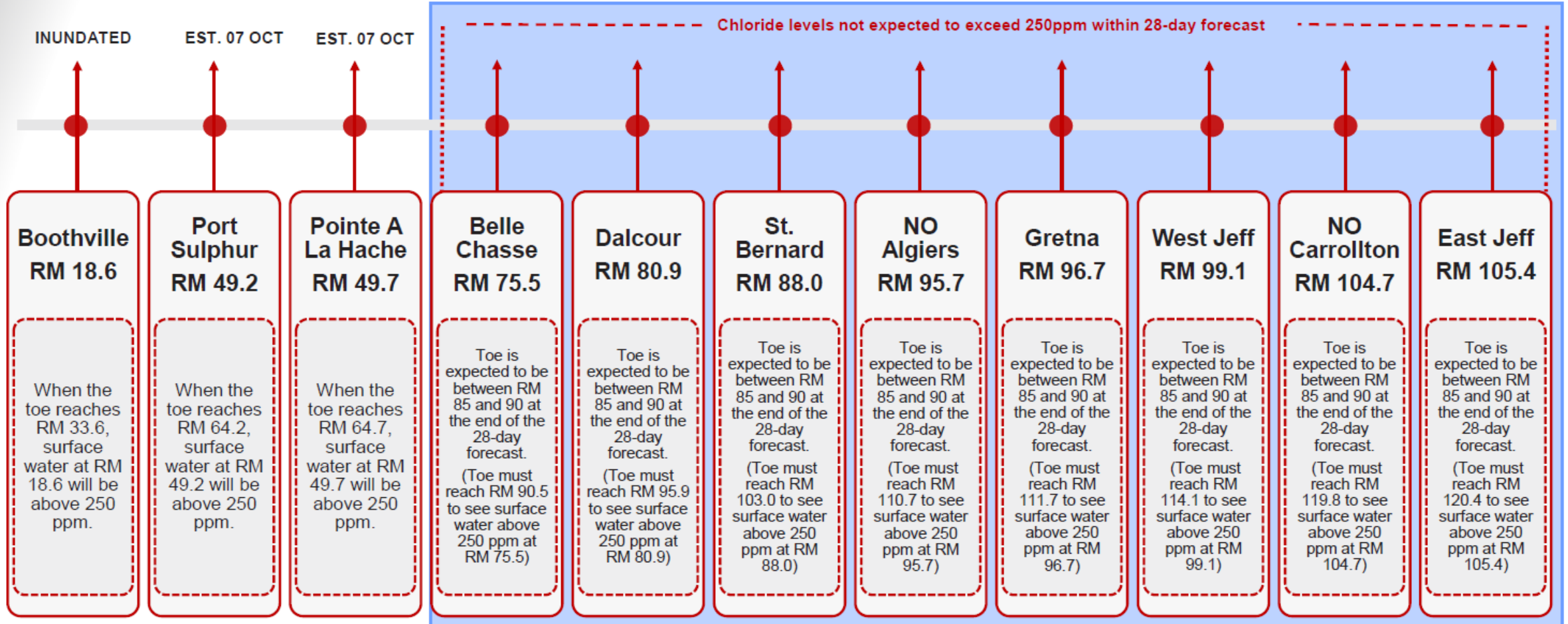
## - WITH SILL CONSTRUCTION EST. 14SEP2024



**U.S. ARMY** TIMELINE REPRESENTS CURRENT NWS FORECAST AND SURVEYED MOVEMENT OF THE SALTWATER TOE

Chloride levels expected to exceed 250ppm through 28-day forecast

DATES ARE OUTSIDE OFFICIAL NATIONAL WEATHER SERVICE LOWER MISSISSIPPI RIVER 28-DAY FORECAST



PROJECTED TIMELINE IS ACCURATE AS OF THE NWS FORECAST FOR 16 SEP 2024 AND IS SUBJECT TO CHANGE.

AS OF 17SEP2024