



TROPICAL STORM FRANCINE SE/SW TASKFORCE BRIEFING

10:00 AM CT

Monday, September 9, 2024

What has changed:

- PTC 6 is now Tropical Storm Francine
- Hurricane, Tropical Storm, and Storm Surge Watches have been issued for much of coastal Louisiana



Situation Overview

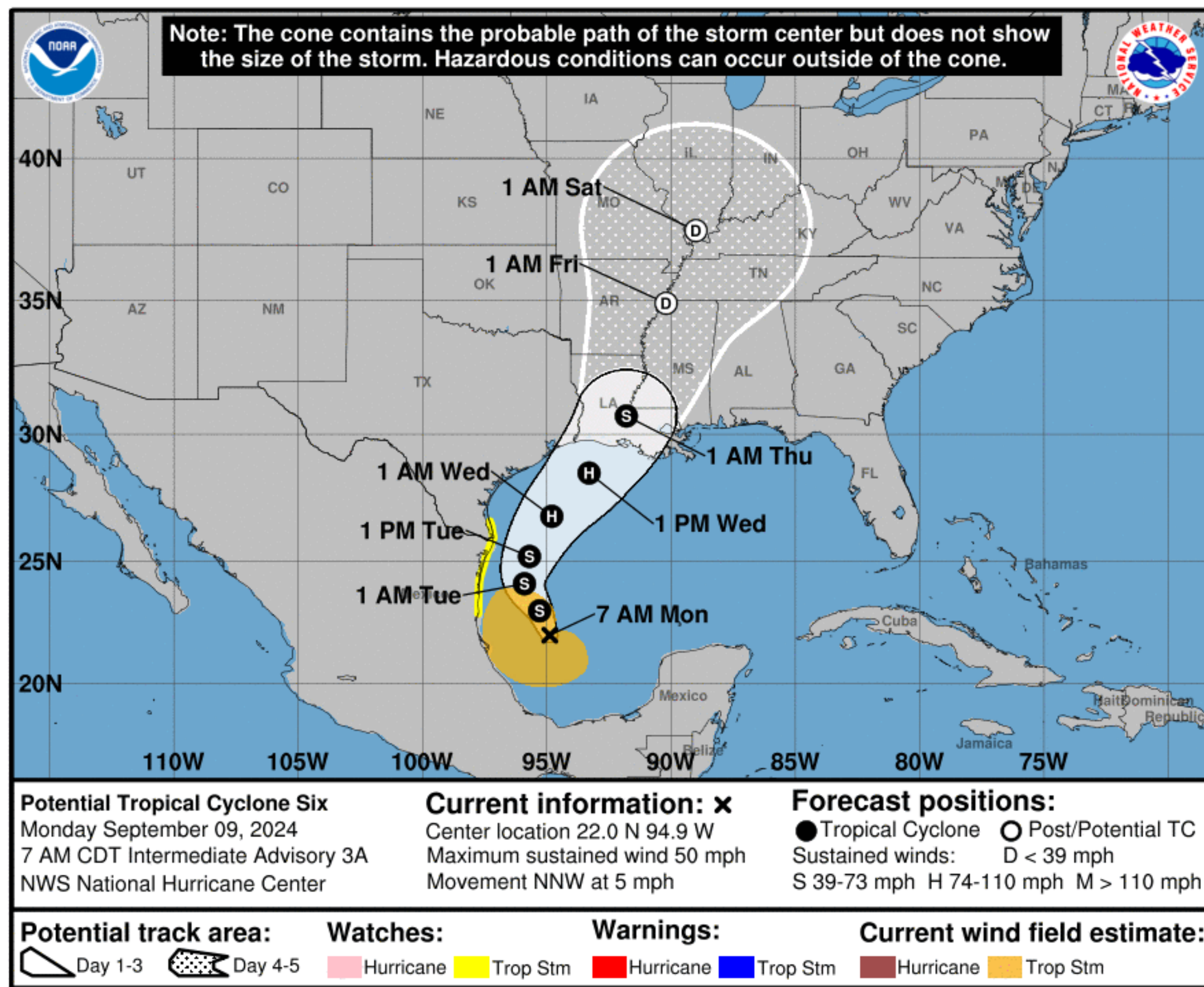
Tropical Storm Francine

- Confidence continues to increase that this storm will bring significant to life-threatening impacts to portions of Louisiana
- TS Francine is expected to bring threats of heavy rain, moderate to potentially major coastal flooding, strong to damaging winds, and even a few tornadoes mainly from Tuesday night through Thursday morning.
- Small changes in storm track could still result in large changes to expected impacts to specific areas.



Situation Overview

Tropical Storm Francine



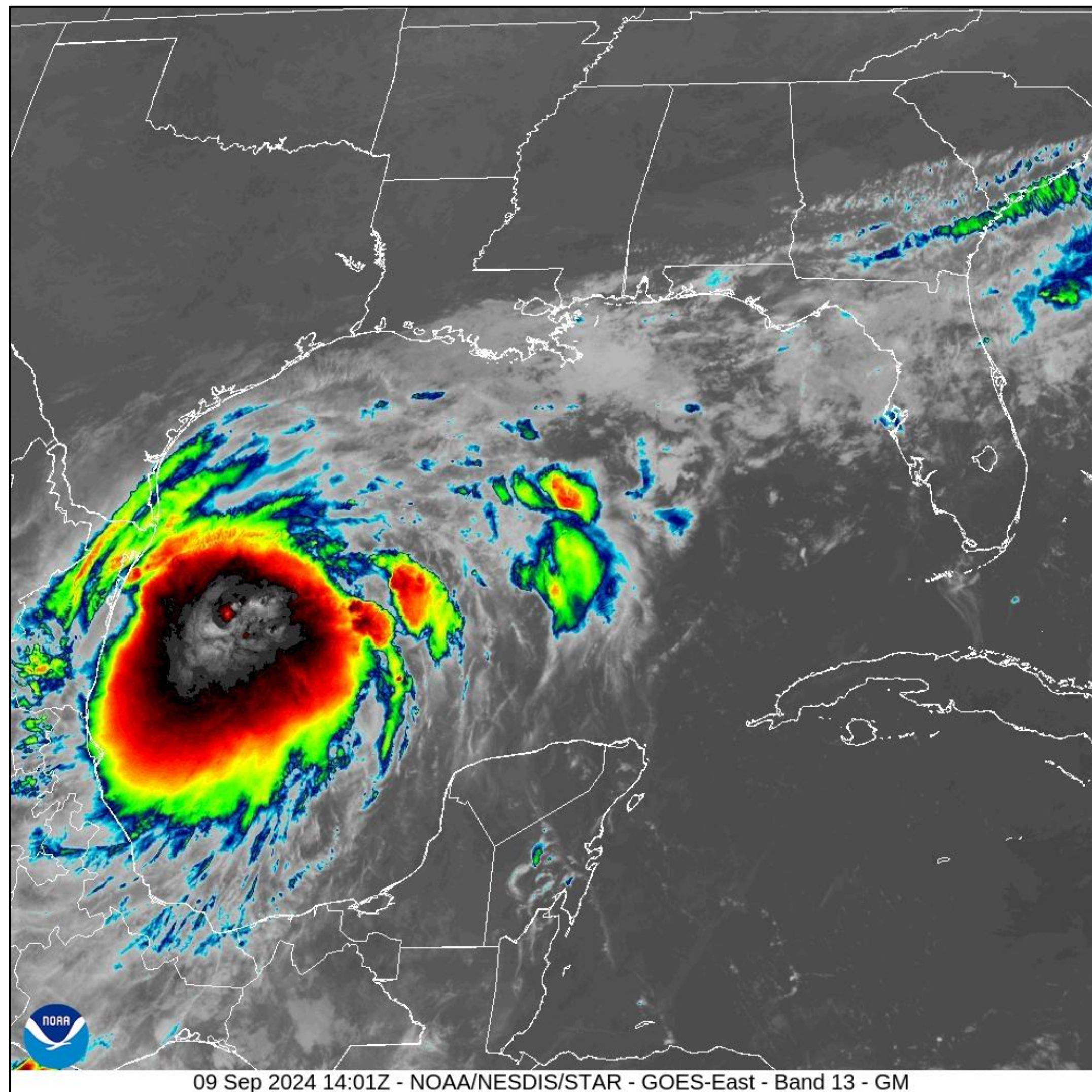
- Tropical Storm Francine has developed in the southwestern Gulf
- It is forecast to move slowly northwestward today then turn more to the northeast tomorrow
- It is forecast to be a hurricane at landfall along the Louisiana coast

NOTE: Do not focus on the exact track.
Impacts can occur well outside the area enclosed by the cone.



Current Satellite View

Tropical Storm Francine



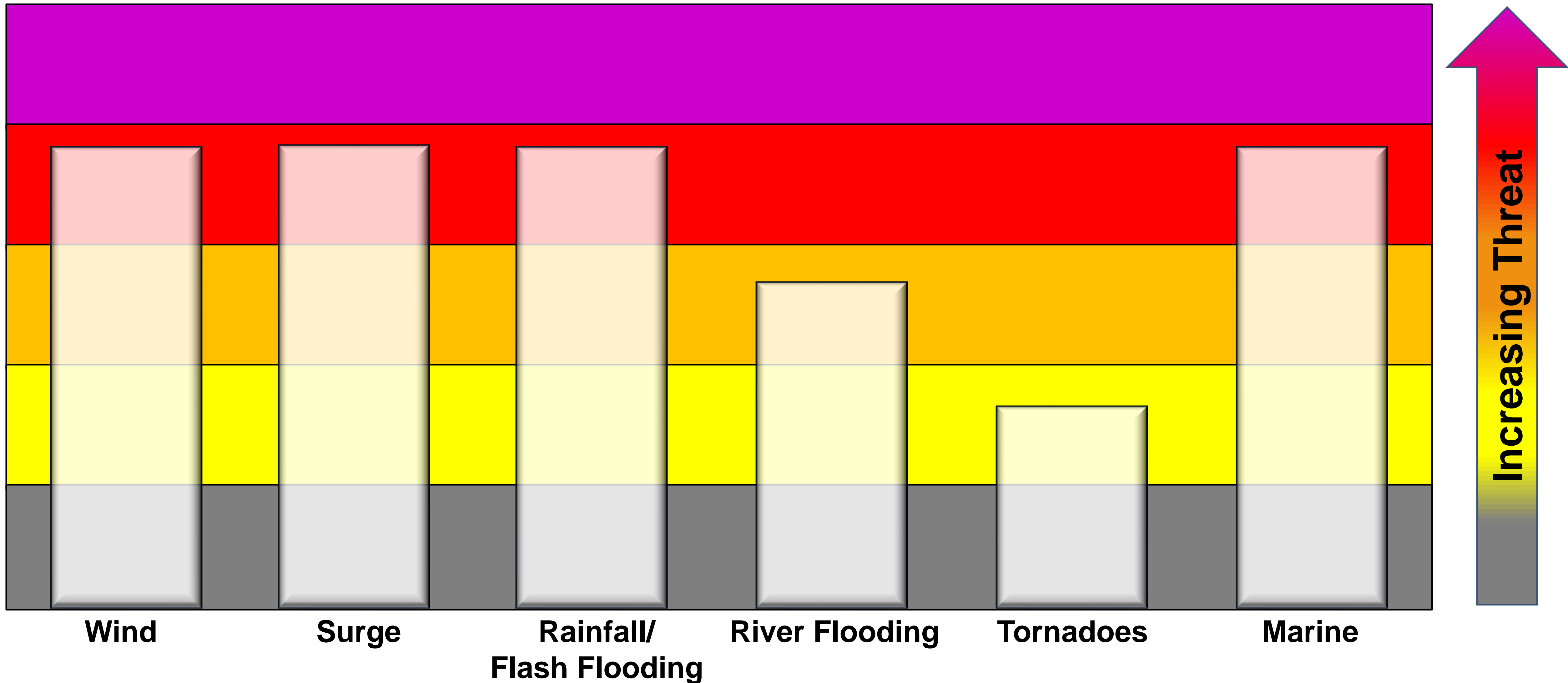
- The storm continues to become better organized as evident in both satellite data and aircraft reconnaissance data



Threat Levels

Tropical Storm Francine

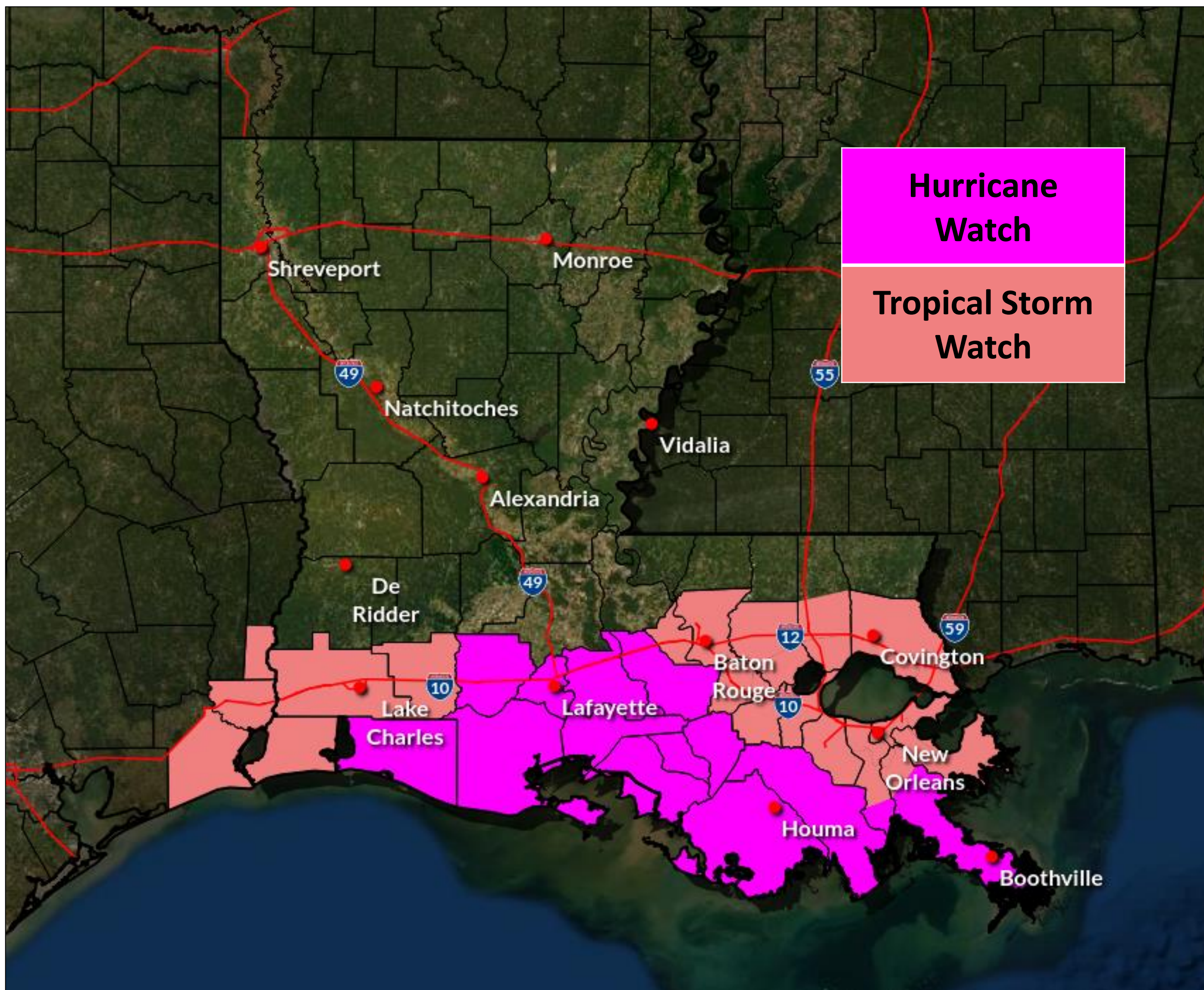
For information on specific hazards in this area, please go to <https://www.weather.gov/srh/tropical?office=lix>





Hurricane and Tropical Storm Watches

Tropical Storm Francine

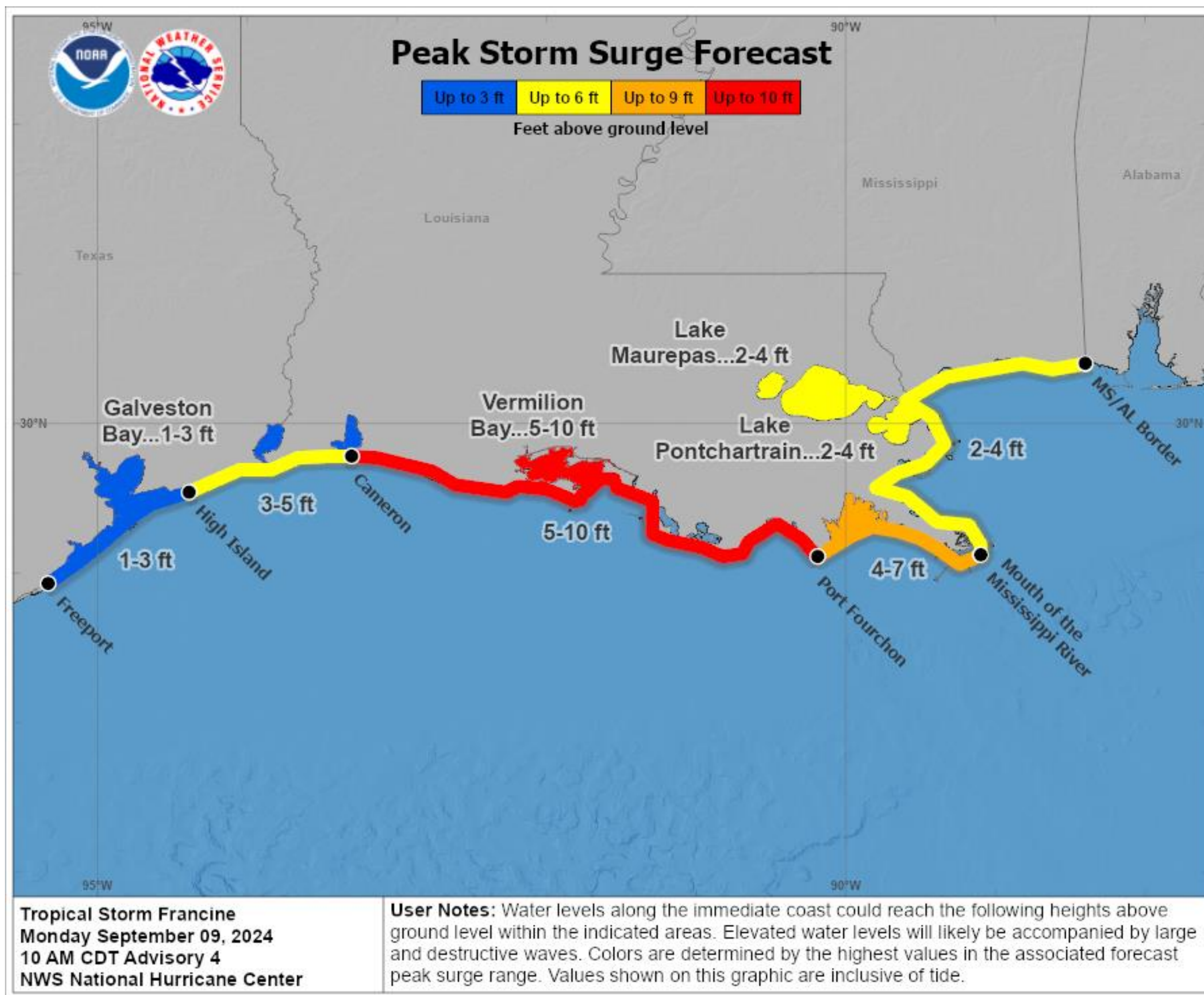


- Tropical storm and hurricane watches have been issued for most of southern Louisiana
- These watches mean that tropical storm/hurricane conditions are possible somewhere in the watch area within the next 48 hours



Peak Storm Surge Forecast

Tropical Storm Francine



- The storm surge inundation could reach the following heights above ground level along the immediate coastal areas
- Does NOT represent any impacts away from the immediate coast
- Locations of greatest risk:
 - 5-10 ft: Cameron to Port Fourchon
 - 4-7 ft: Port Fourchon to the MS River
 - 3-5 ft: MS River to the Pearl River and LA/TX line to Cameron
 - 2-4 ft: Lakes Borgne, Pontchartrain and Maurepas



Storm Surge Watch/Warning

Tropical Storm Francine



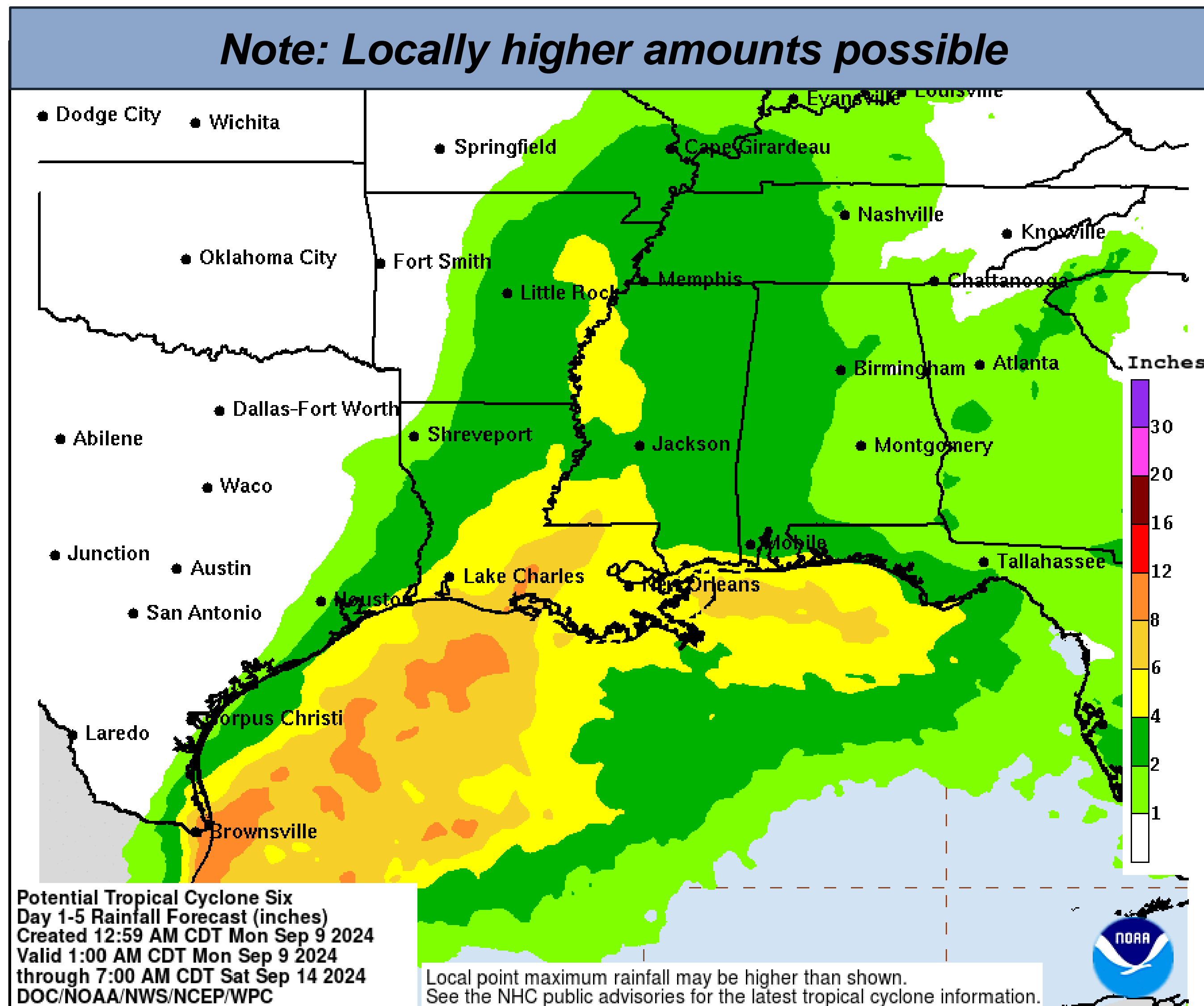
- A storm surge watch has been issued for all coastal areas of Louisiana
- There is a possibility of life-threatening inundation from storm surge somewhere in the specified area within the next 48 hours.
- Storm surge is not a threat to the federal levee systems, but some of the shorter local levees may be overtopped



Storm Total Rainfall Forecast

Tropical Storm Francine

Note: Locally higher amounts possible

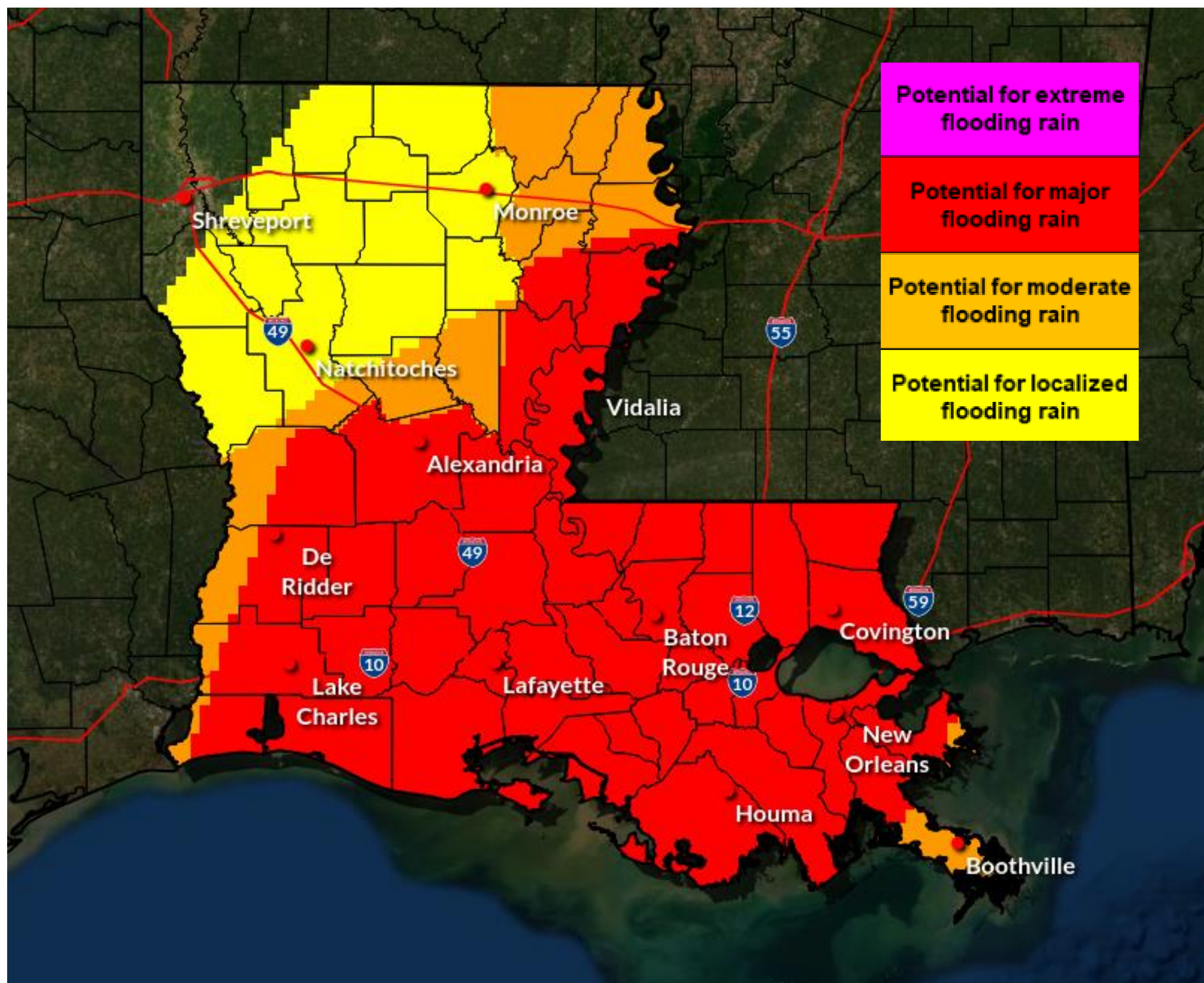


- Rainfall forecast through 7am Saturday
- Locally, most rain will occur between Wednesday morning and midday Thursday
- **Exact totals will depend on storm track and whether any banding features set up across the local area**
- Heavy rain could result in flash flooding, ponding in low lying areas and rises on area rivers



Inland Flooding Impacts

Tropical Storm Francine

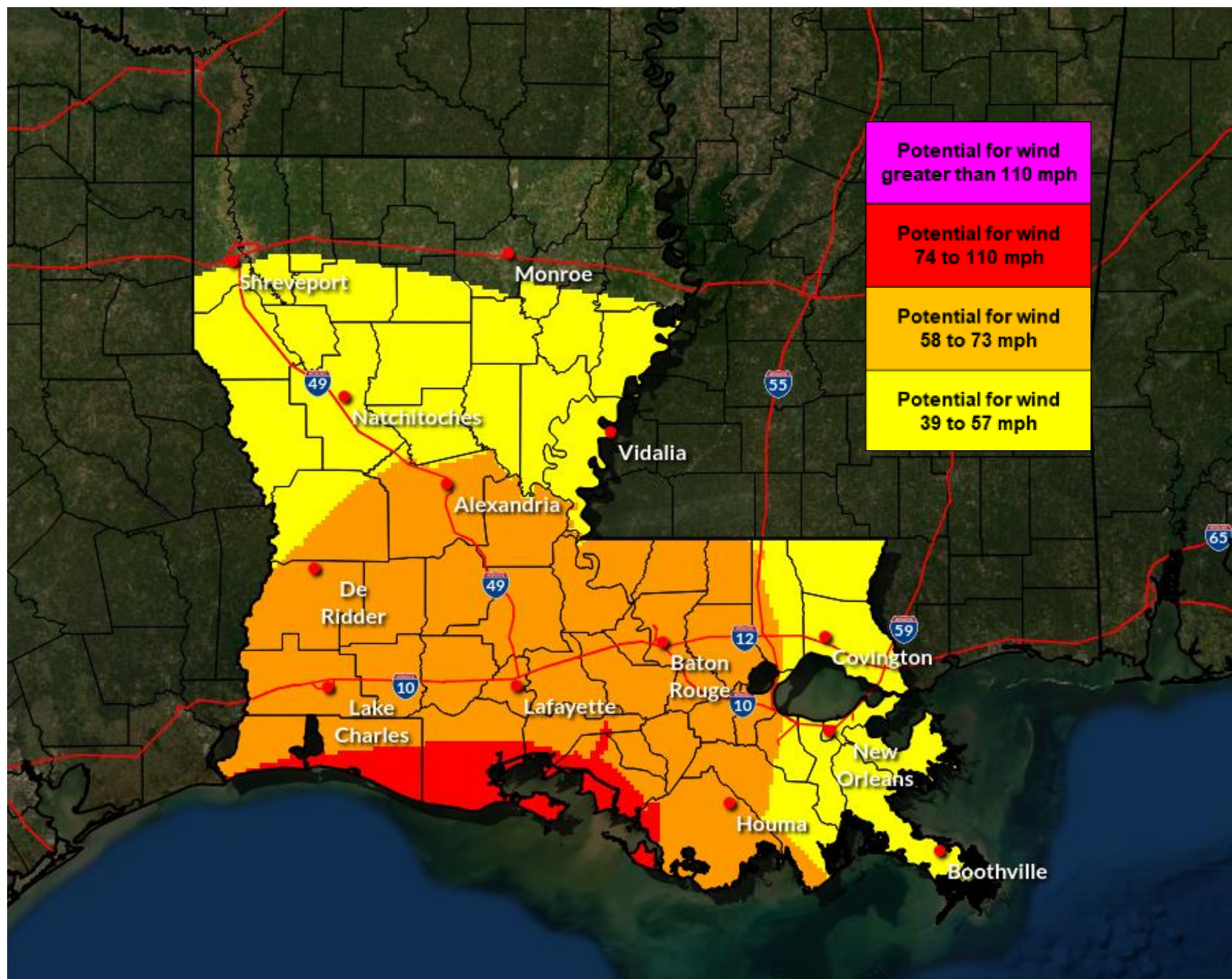


- The greatest threat will be generally late Tuesday night through Wednesday night
- High rainfall rates and saturated soils could quickly result in flash flooding, especially in urban and poor drainage areas
- Depending on where the heaviest rain falls, additional flooding may also occur as the heavy rain drains into area rivers. River forecasts do NOT yet include the heavy rainfall from this storm.



Wind Threat / Potential Impact

Tropical Storm Francine

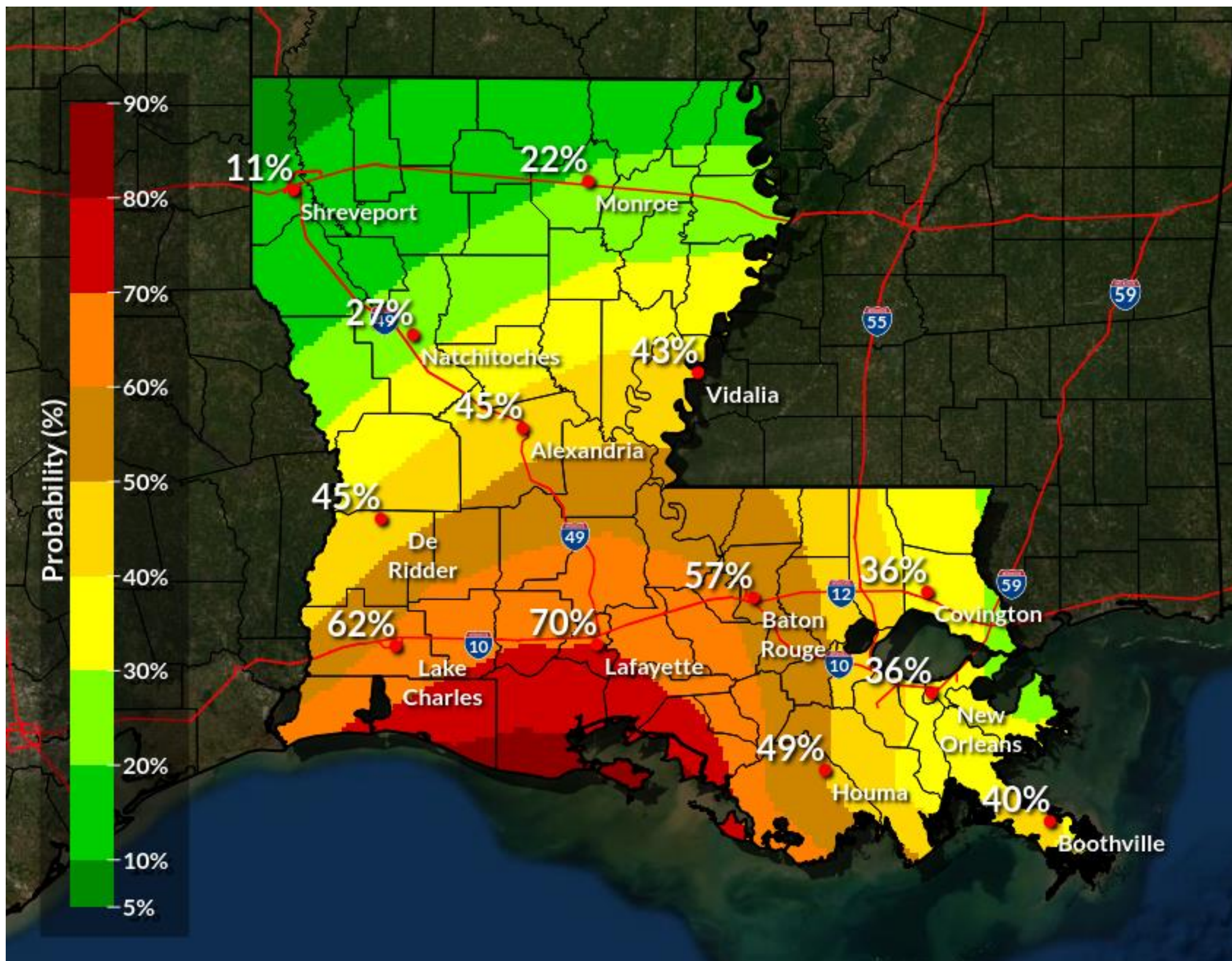


- Coastal areas from near the TX border to near Atchafalaya Bay (red shading) should prepare for hurricane force winds
- Much of southern Louisiana (orange shading) should prepare for damaging winds
- Impacts will include scattered to numerous power outages and isolated damage to trees and structures, with potential for more significant structural damage where Francine's eyewall tracks



Tropical Storm Wind Speed Probabilities

Tropical Storm Francine

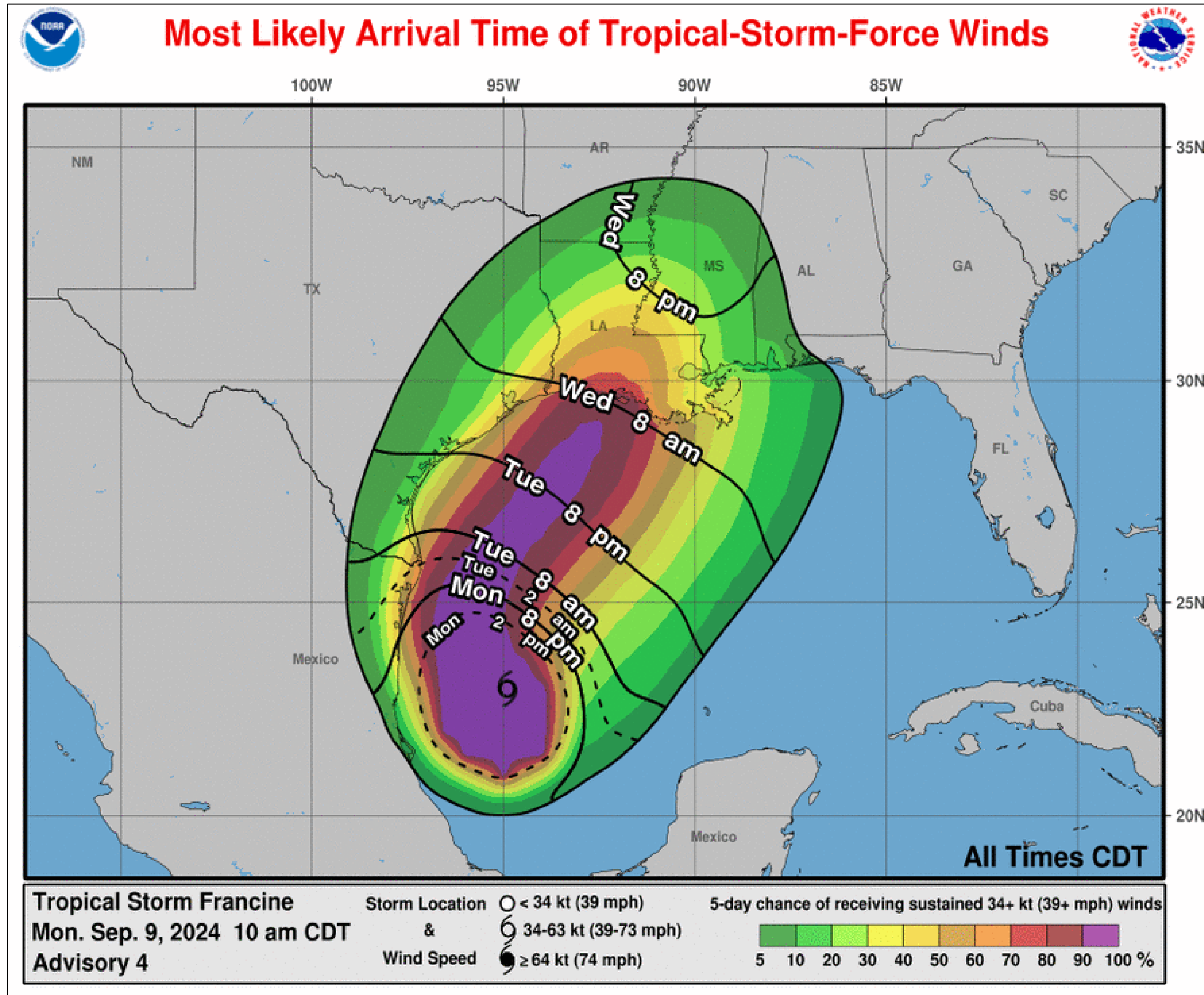


- There is at least a 50% chance of sustained tropical storm force winds at all points from near Houma to near Clinton to near Alexandria to De Quincy (brown to red shading in the map)
- Tropical storm force winds are most likely to begin on Wednesday at the coast



Most Likely Time of Arrival

Tropical Storm Francine

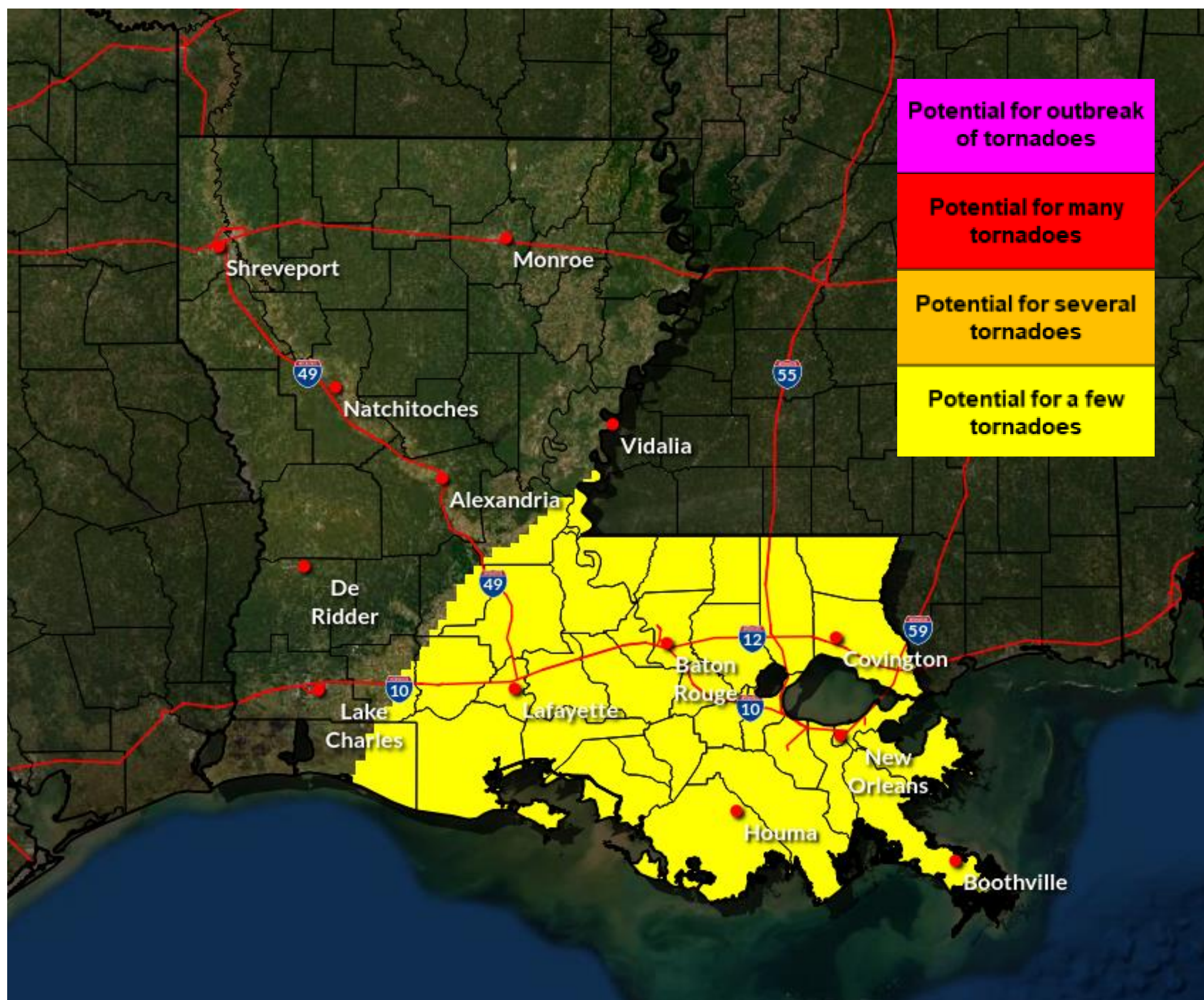


- The most likely time of arrival of Tropical Storm Force Winds at the coast will be Wednesday morning, spreading inland throughout the day
- However, if the storm speeds up, winds could arrive at the coast as early as overnight Tuesday night



Potential Tornado Impacts

Tropical Storm Francine



- A few weak and short-lived tornadoes will be possible in any rain bands as Francine makes landfall and moves inland Wednesday into Thursday night
- Tornadoes are most likely in areas to the right/east of where Francine makes landfall



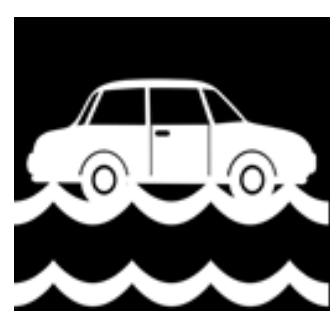
Key Take-Aways

Tropical Storm Francine

Confidence is increasing that Francine will bring significant to life-threatening impacts to portions of southern Louisiana



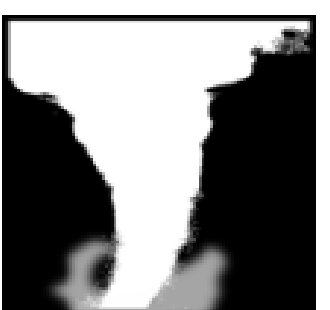
Hurricane force winds should mainly be limited to coastal areas near where Francine makes landfall, but damaging winds will be possible farther inland. Expect scattered damage to trees, powerlines & some structures, with more concentrated damage where Francine's center tracks.



Major coastal flooding will be possible during high tide Wednesday through Thursday with the highest water levels occurring during high tide. Some areas could be cut off and some local levees could be overtopped.



Widespread rainfall totals of 4-8" are forecast across the southern part of the state, with much of that rain falling between Wednesday morning and midday Thursday. Ponding of water in low lying areas, flash flooding, and rises on area rivers will be possible.




A few tornadoes may be possible, mainly on Wednesday and mainly east of where Francine's center tracks





Dangerous marine conditions likely across the coastal waters, especially west of the Mississippi River closer to the forecast track of the storm.





Contact Info:


 **Web:** <http://weather.gov/neworleans>

 **Phone:** (985) 649-0429 x4

 **E-mail:** sr-lix.forecasters@noaa.gov

 **Facebook:** NWSNewOrleans

 **Twitter:** NWSNewOrleans

 **YouTube:** NWSNewOrleans

For the latest graphics and information go to: www.hurricanes.gov or weather.gov/lix/tropical