



WINTER WEATHER BRIEFING

1:00 PM

Wednesday, January 22, 2025

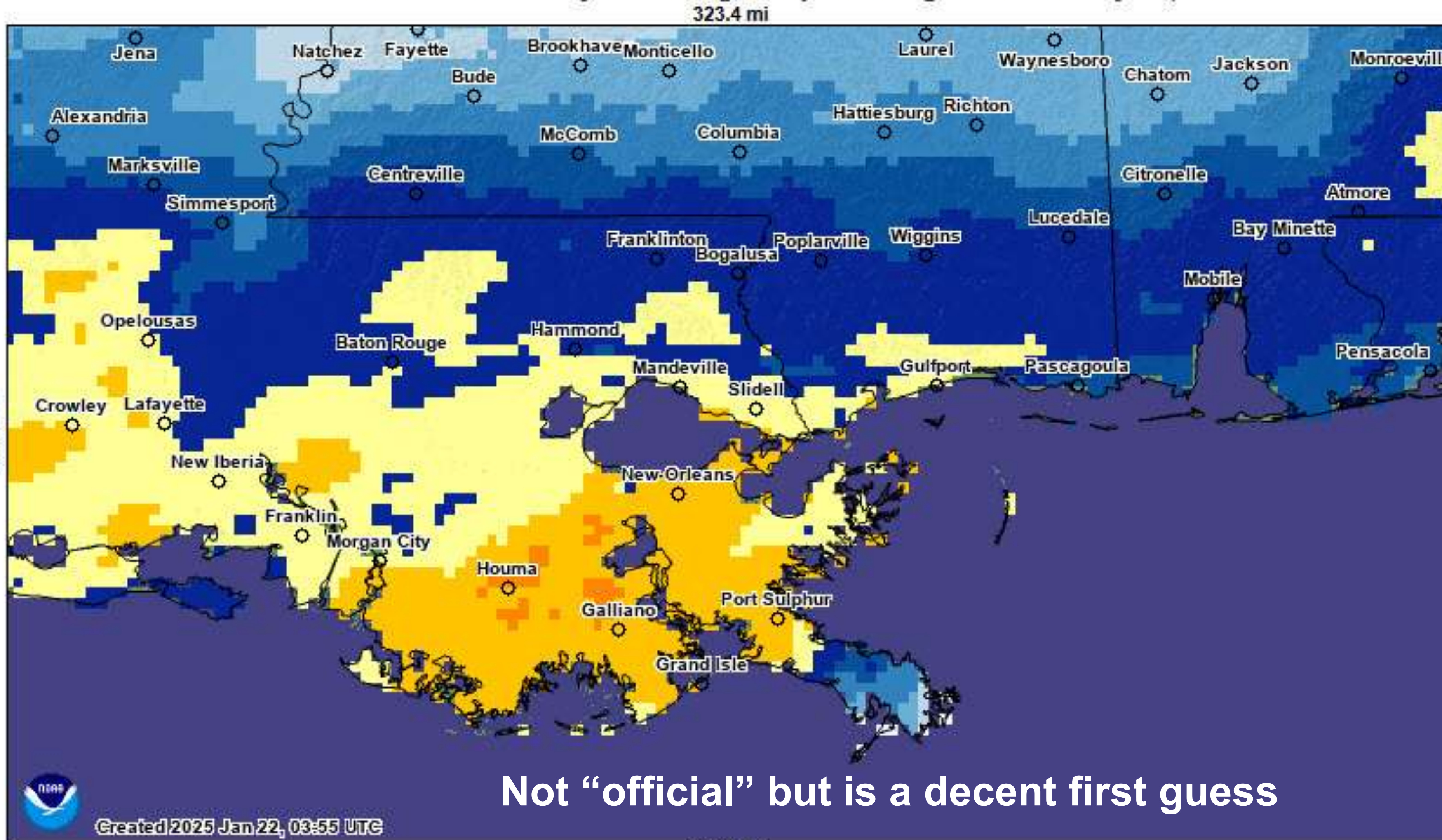
Prepared by:

NWS New Orleans/Baton Rouge

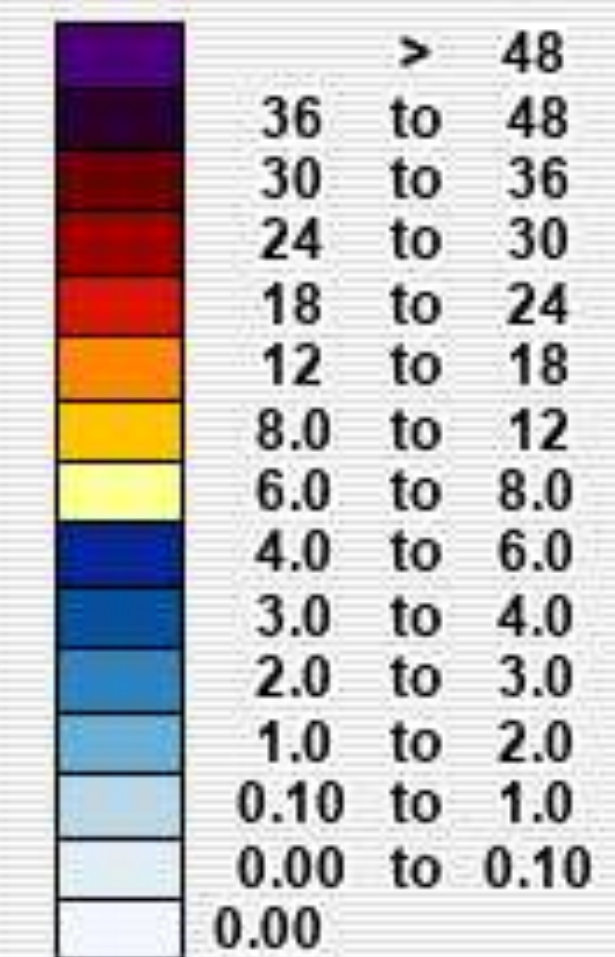


Yesterday's Snow

National Gridded Snowfall Analysis during 24h preceding 2025 January 22, 0:00 UTC

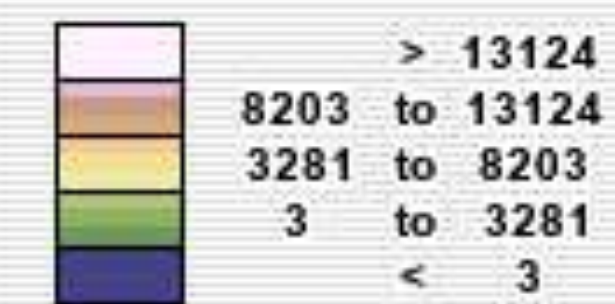


Inches of depth



Not Estimated

Elevation in feet



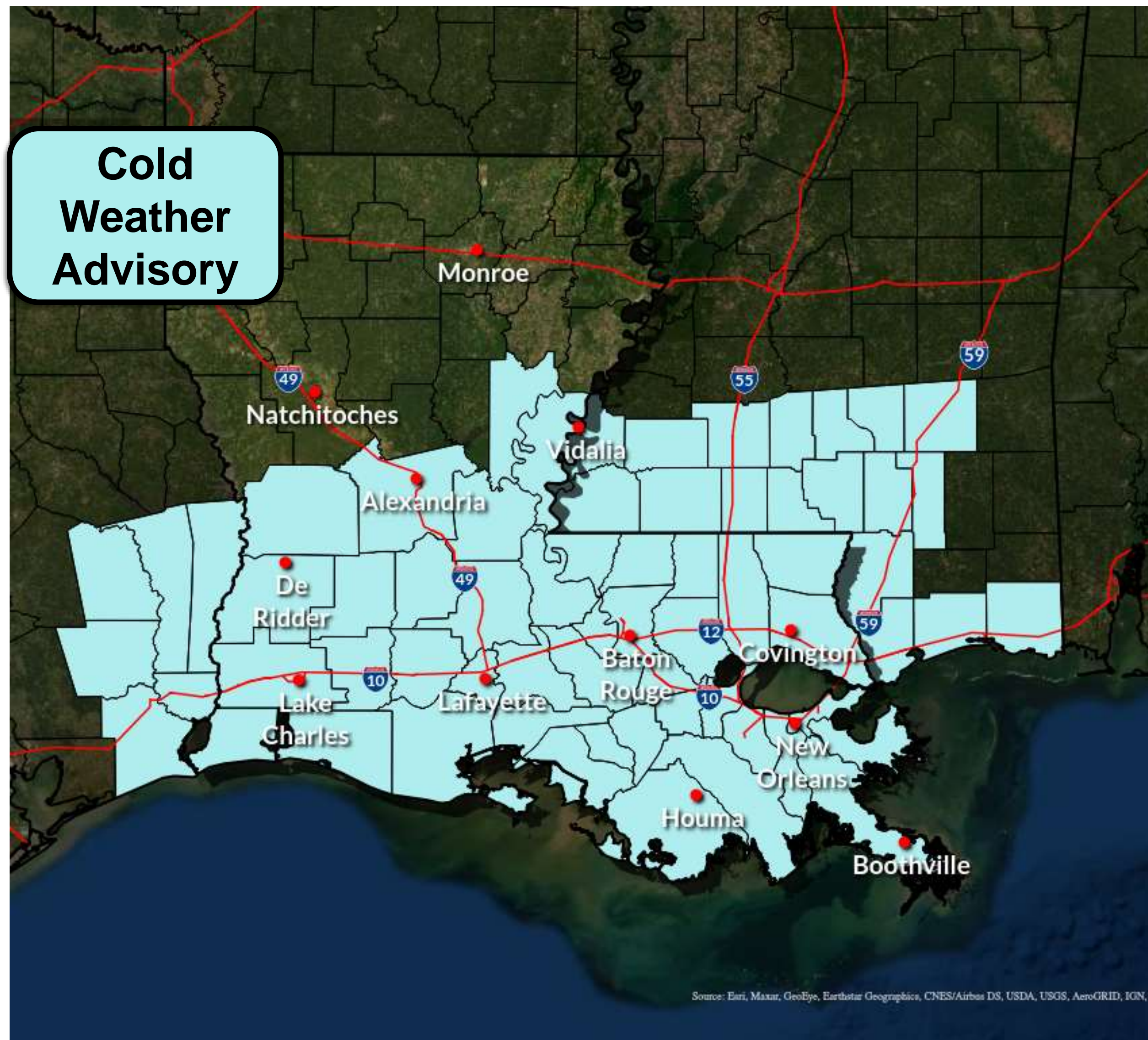
Not "official" but is a decent first guess

Created 2025 Jan 22, 03:55 UTC



Winter Storm Warning

In effect through this evening



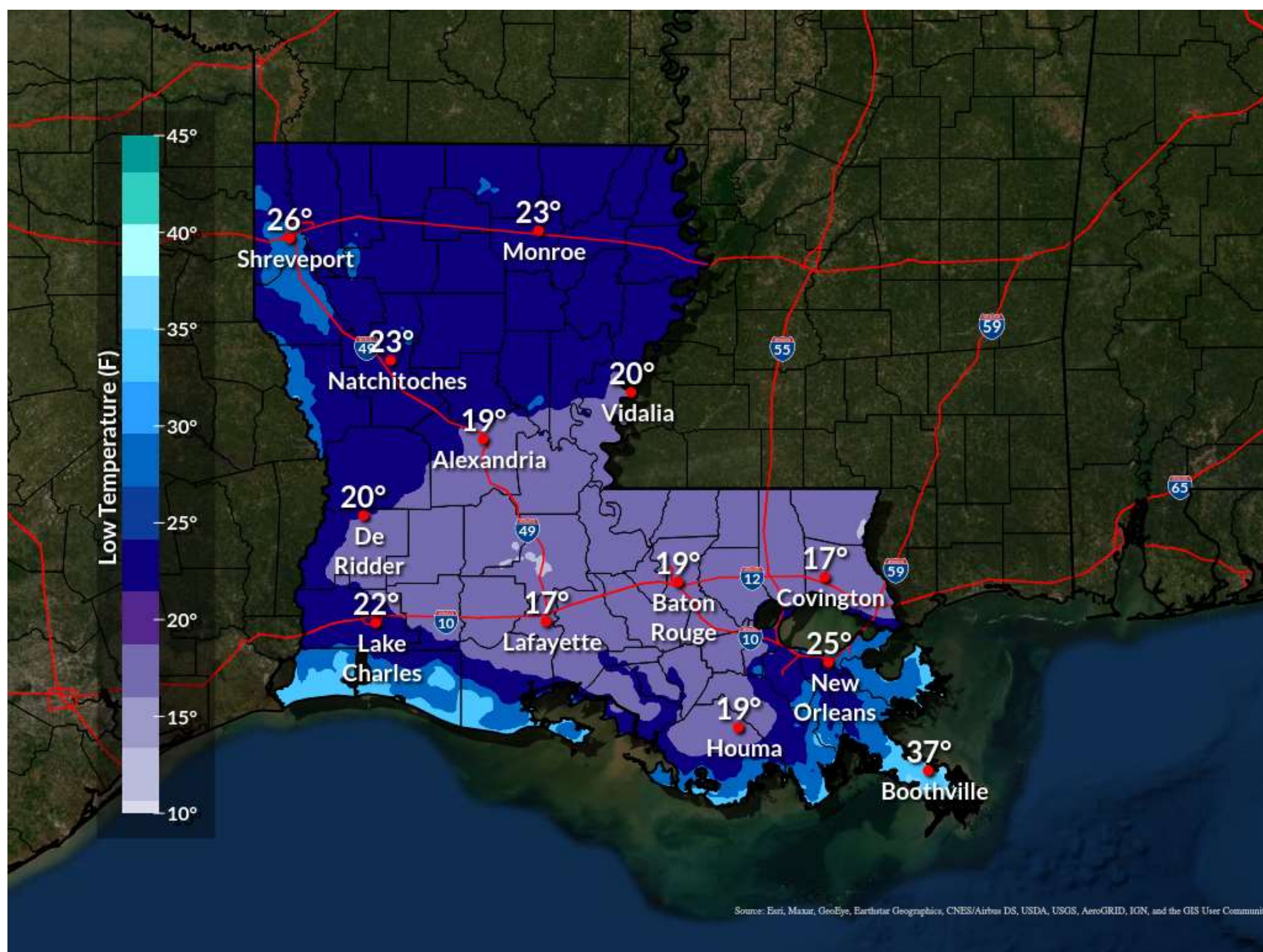
- Morning lows were extremely cold with many single digit across southwestern to south-central LA.
- Still quite a bit of snow on the ground and this will lead to another very cold night.
- Another prolonged freezing night in store.
- Many roads, bridges, overpasses, etc remain closed and will struggle to melt and evaporate today and the roads that don't will refreeze quickly this evening.
- Extreme Cold Warning may be needed for portions of the Advisory area mainly due to morning lows.



Thursday: Forecast Temperatures and Wind Chills

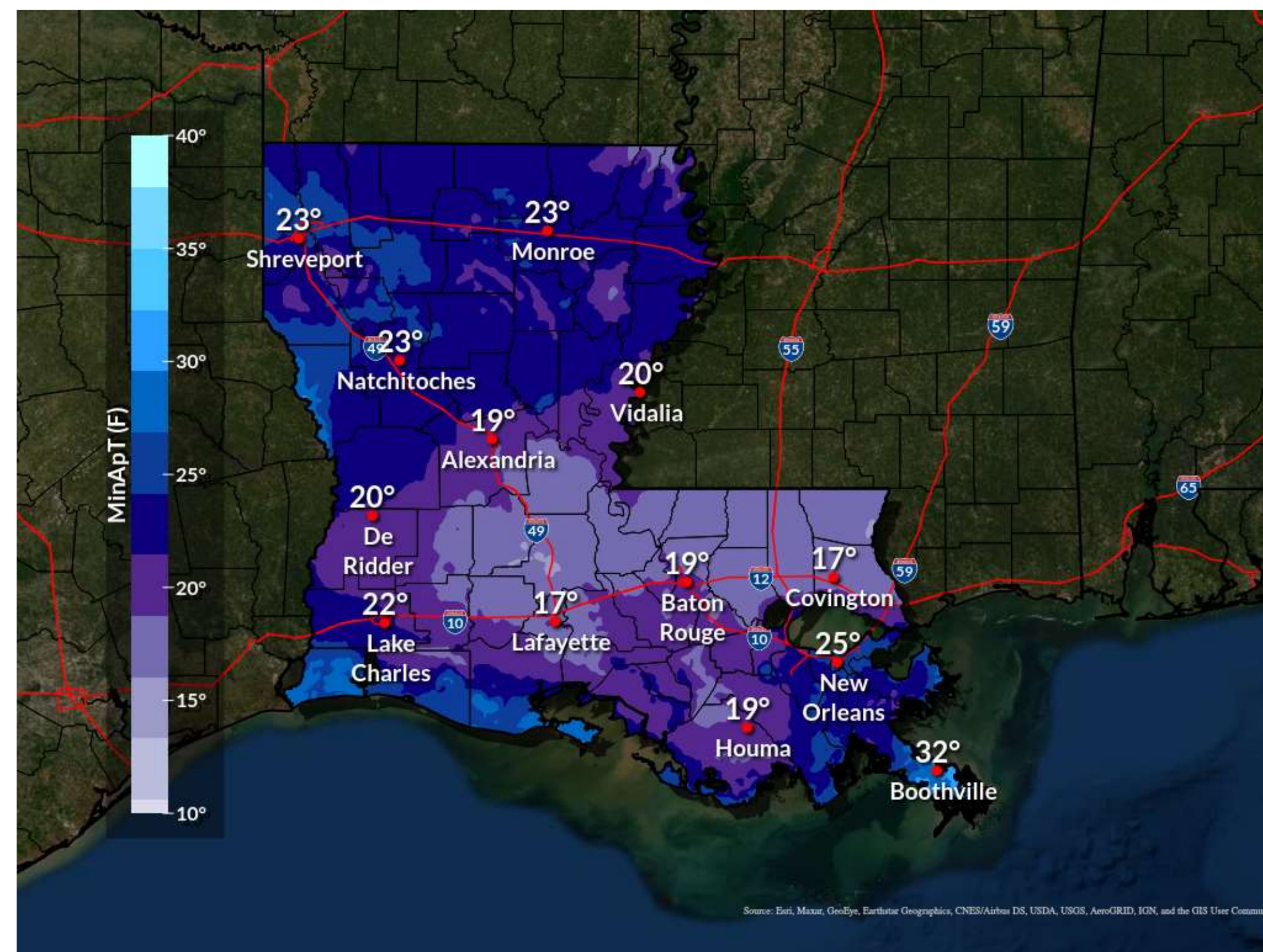
Values expected in the early morning hours

Forecast Low Temperature



Another bitterly cold night with lows in the mid teens to mid 20s across much of the state

Minimum Wind Chill



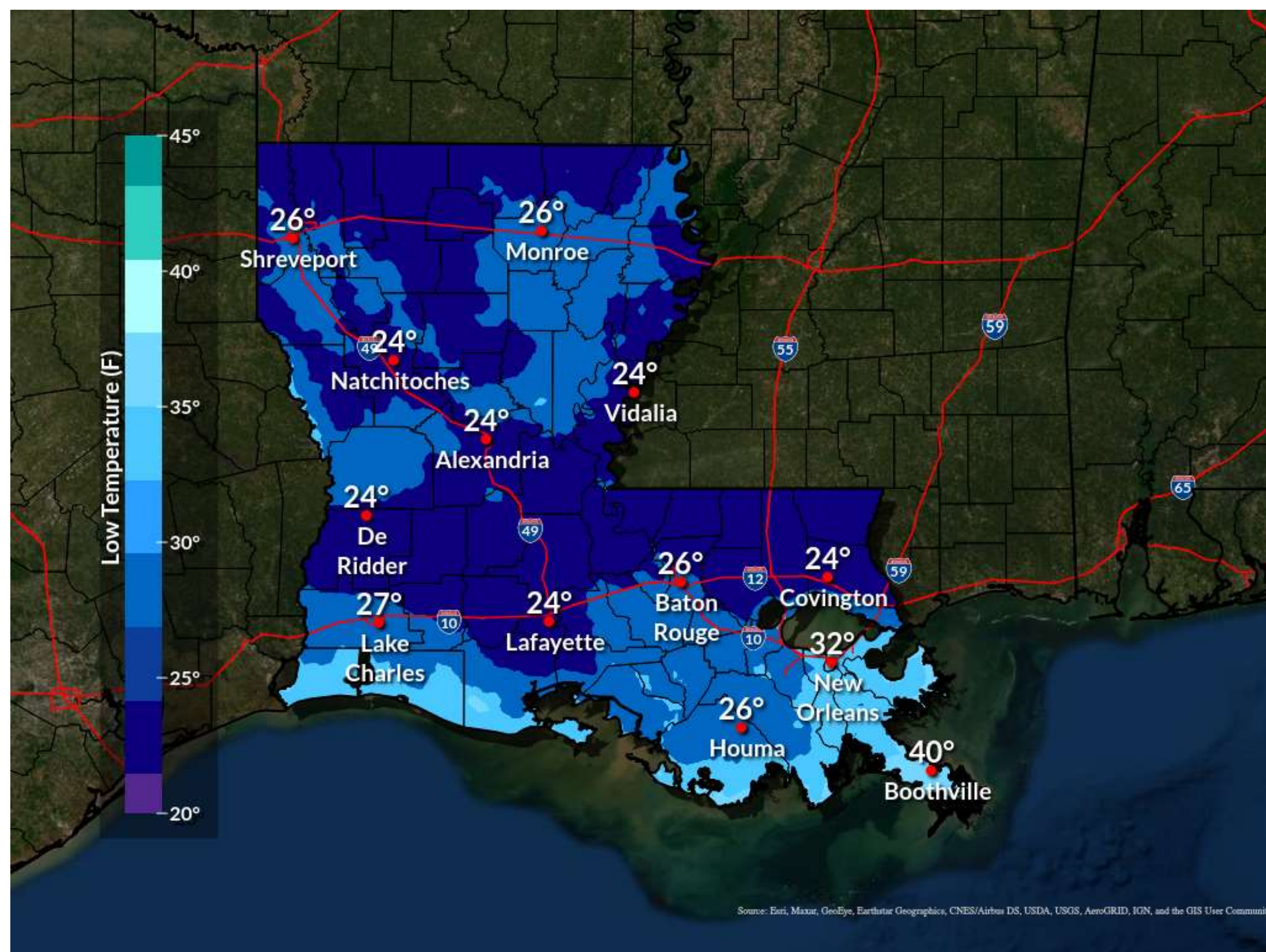
Winds will be very light so wind chill values will be rather close to the forecast lows



Friday: Forecast Temperatures and Wind Chills

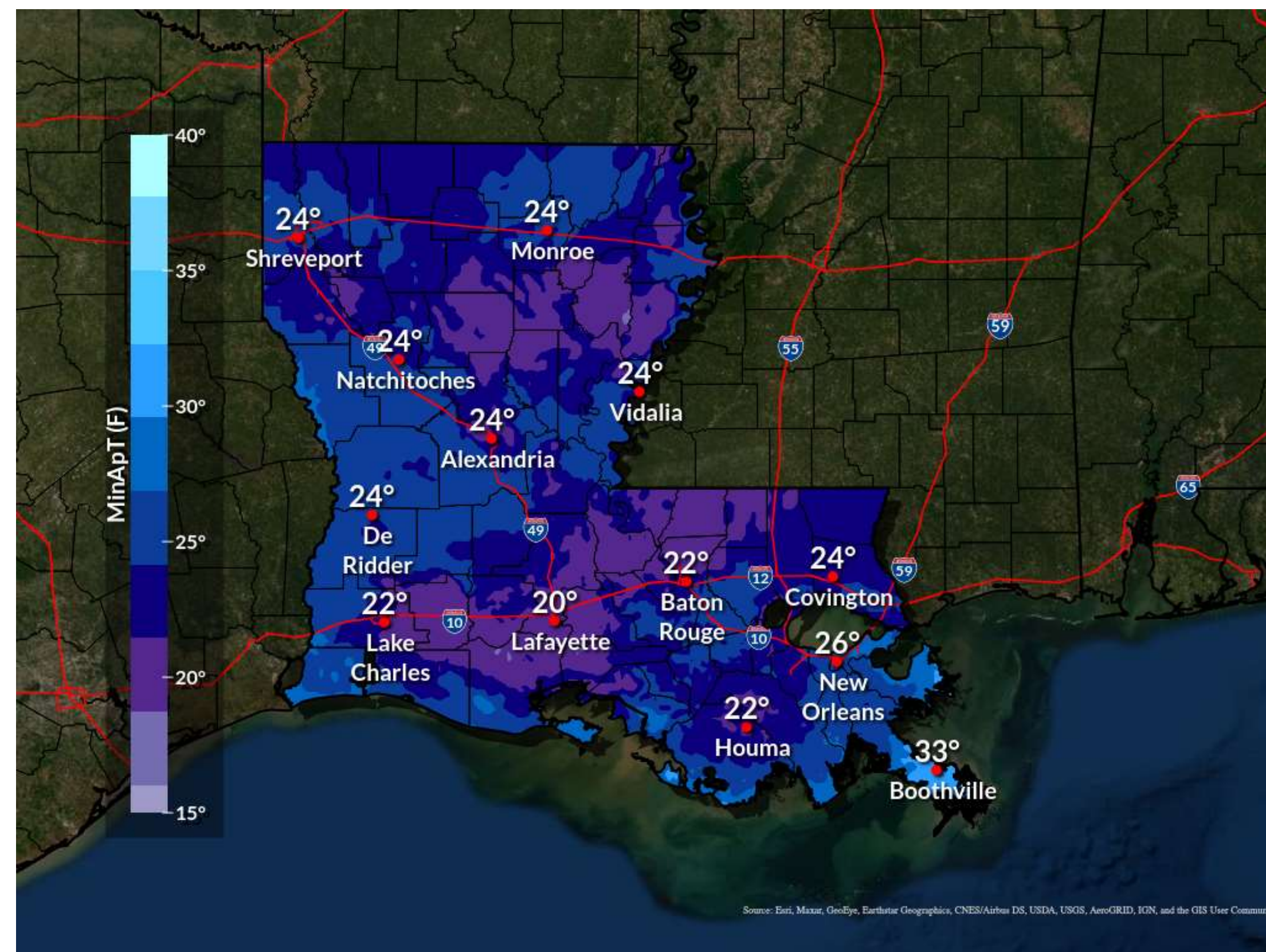
Values expected in the early morning hours

Forecast Low Temperature



More cold with a moderate to light freeze expected across much of the area

Minimum Wind Chill



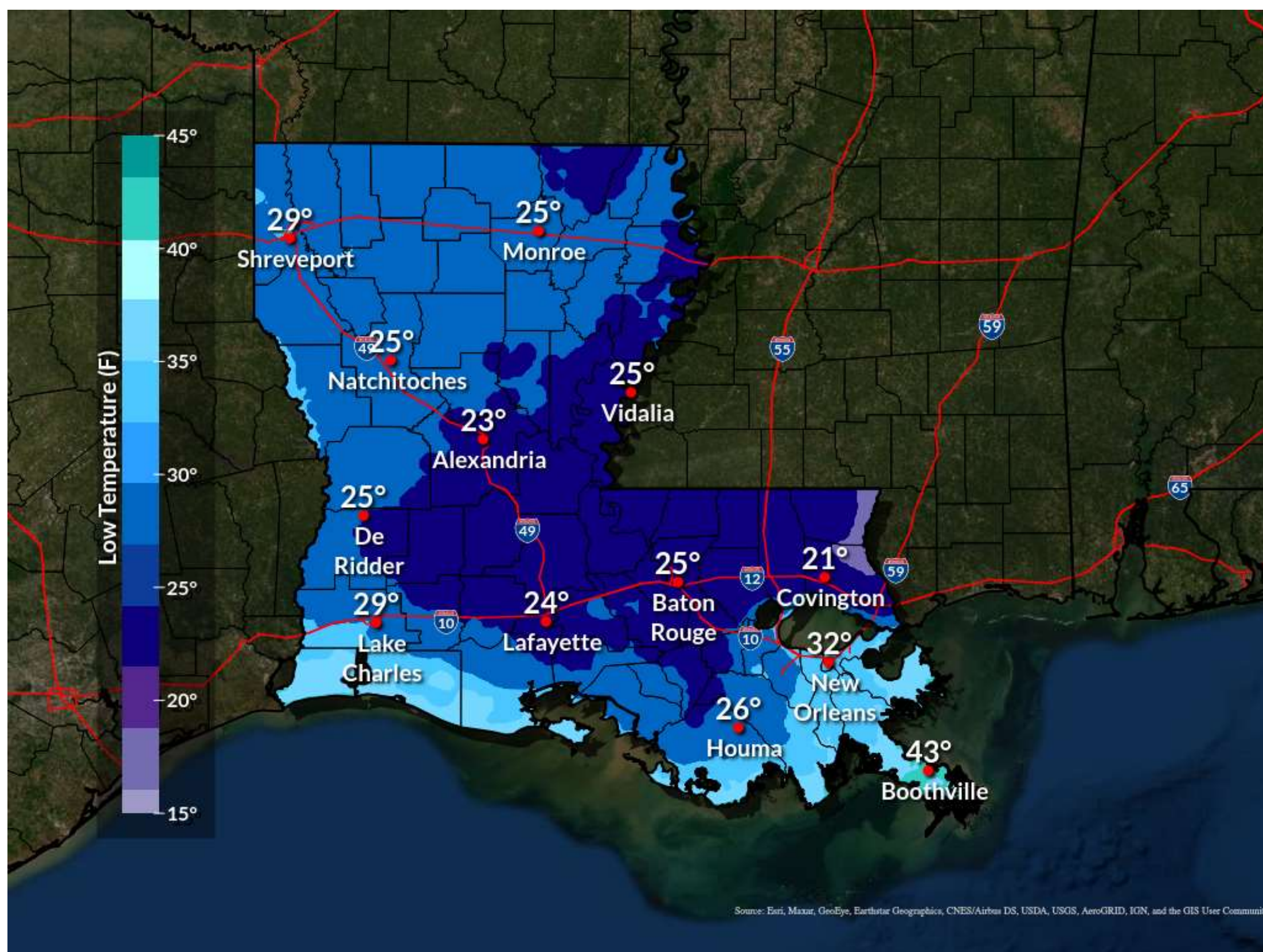
Winds slightly stronger which will lead to another frigid night and additional Cold Weather Advisories may be needed



Saturday: Forecast Temperatures and Wind Chills

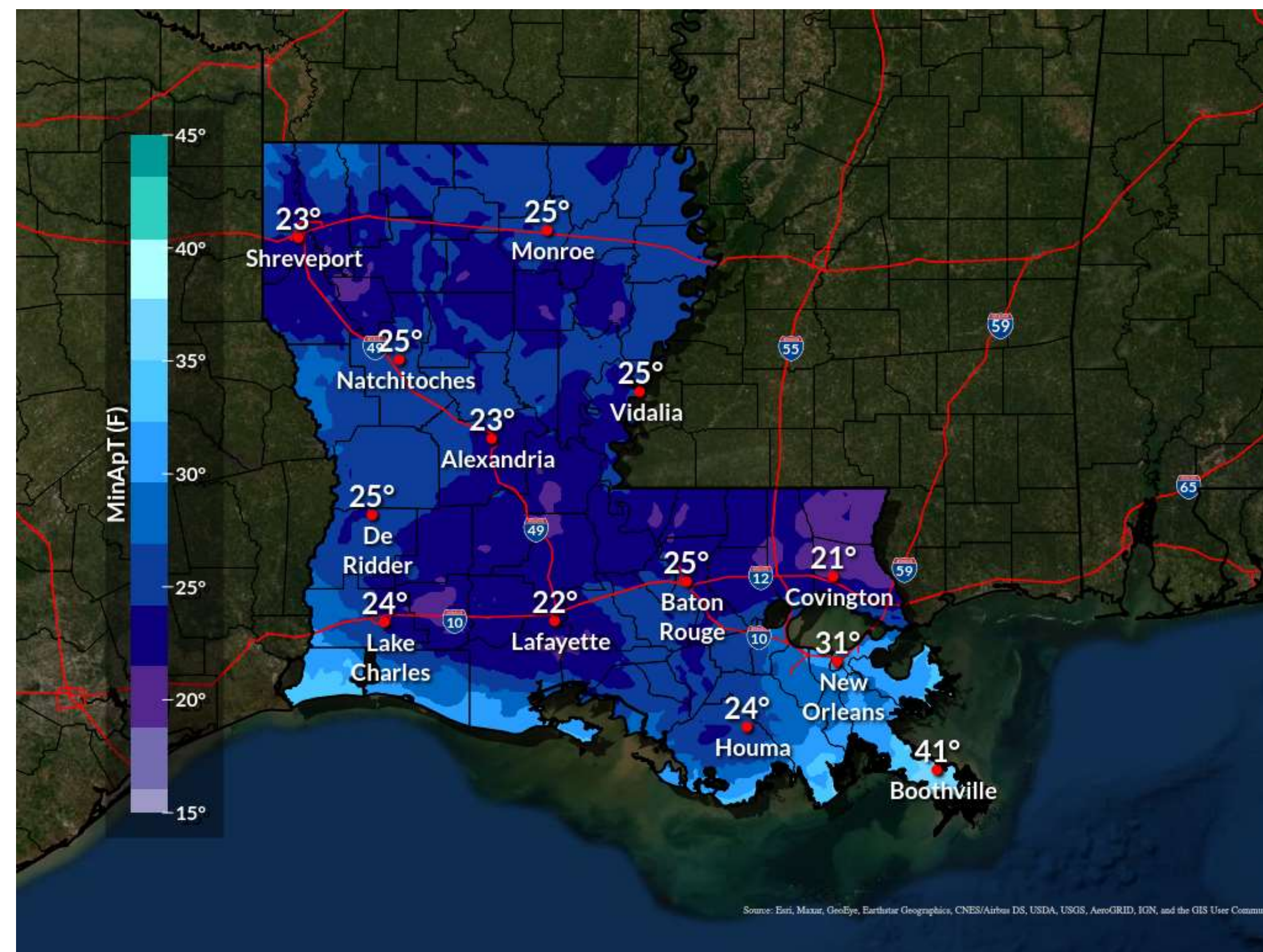
Values expected in the early morning hours

Forecast Low Temperature



Another cold night and light to a moderate freeze expected again across much of the area

Minimum Wind Chill



Saturday morning fairly similar to Friday morning with wind chills again in the 20s across much of the state



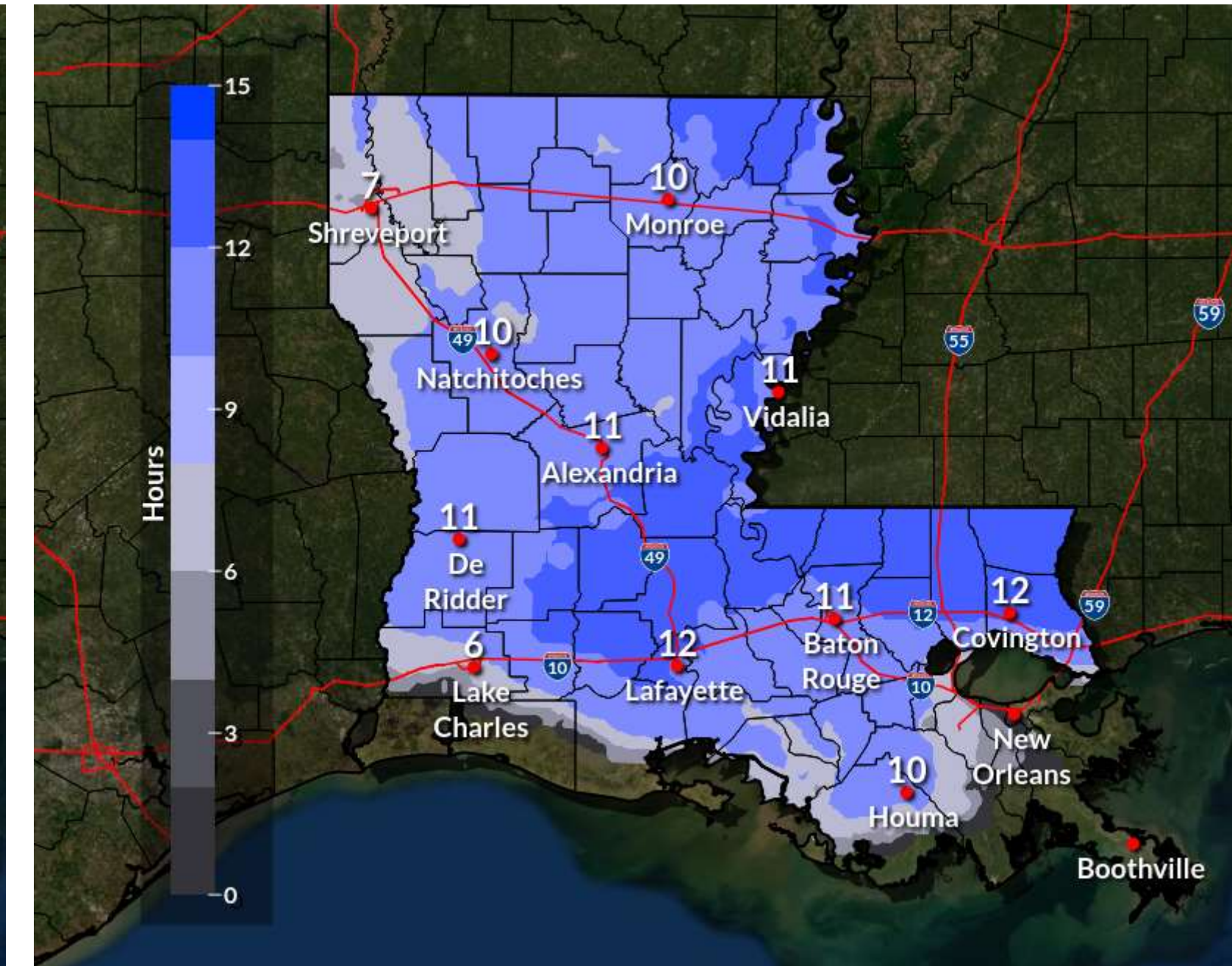
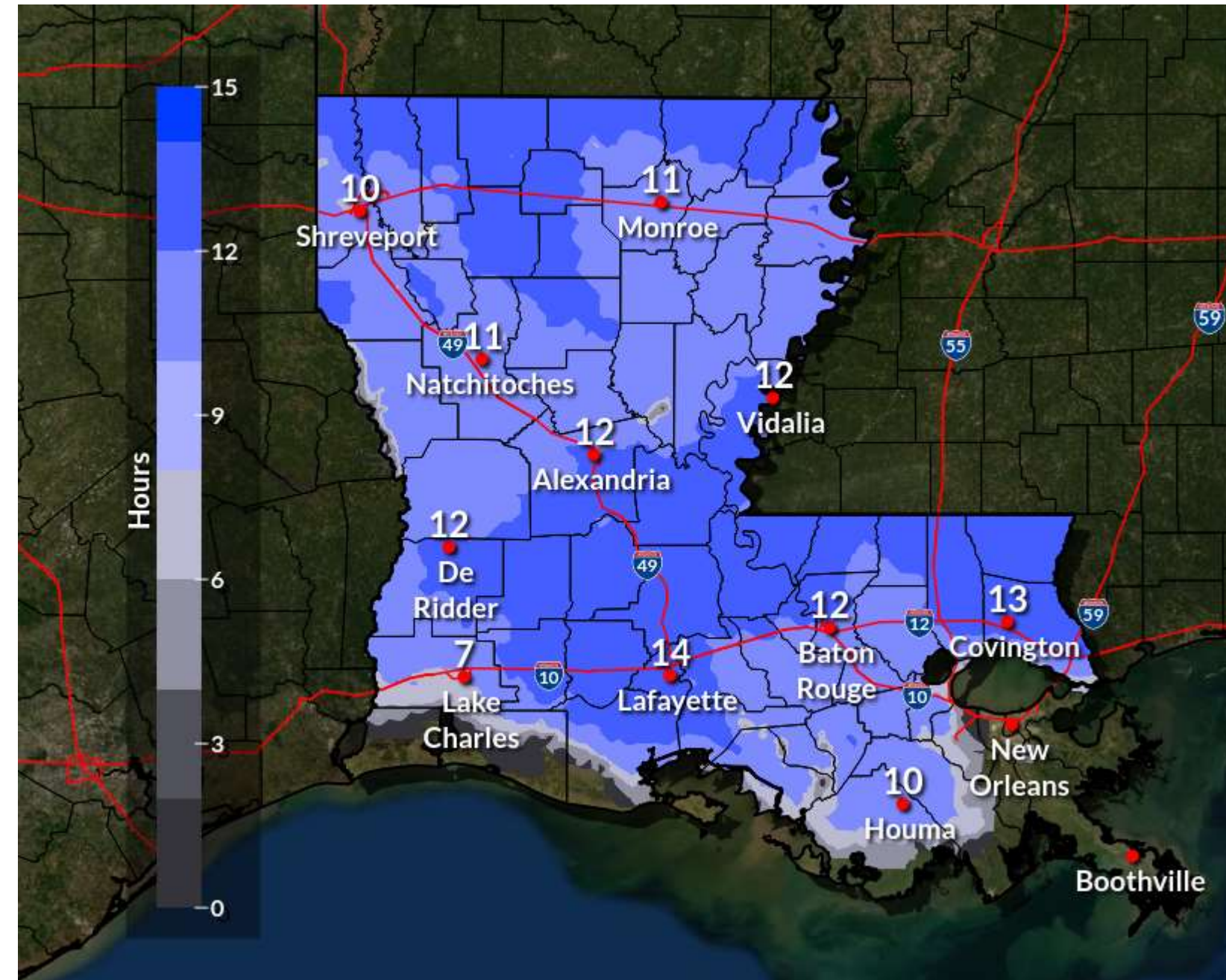
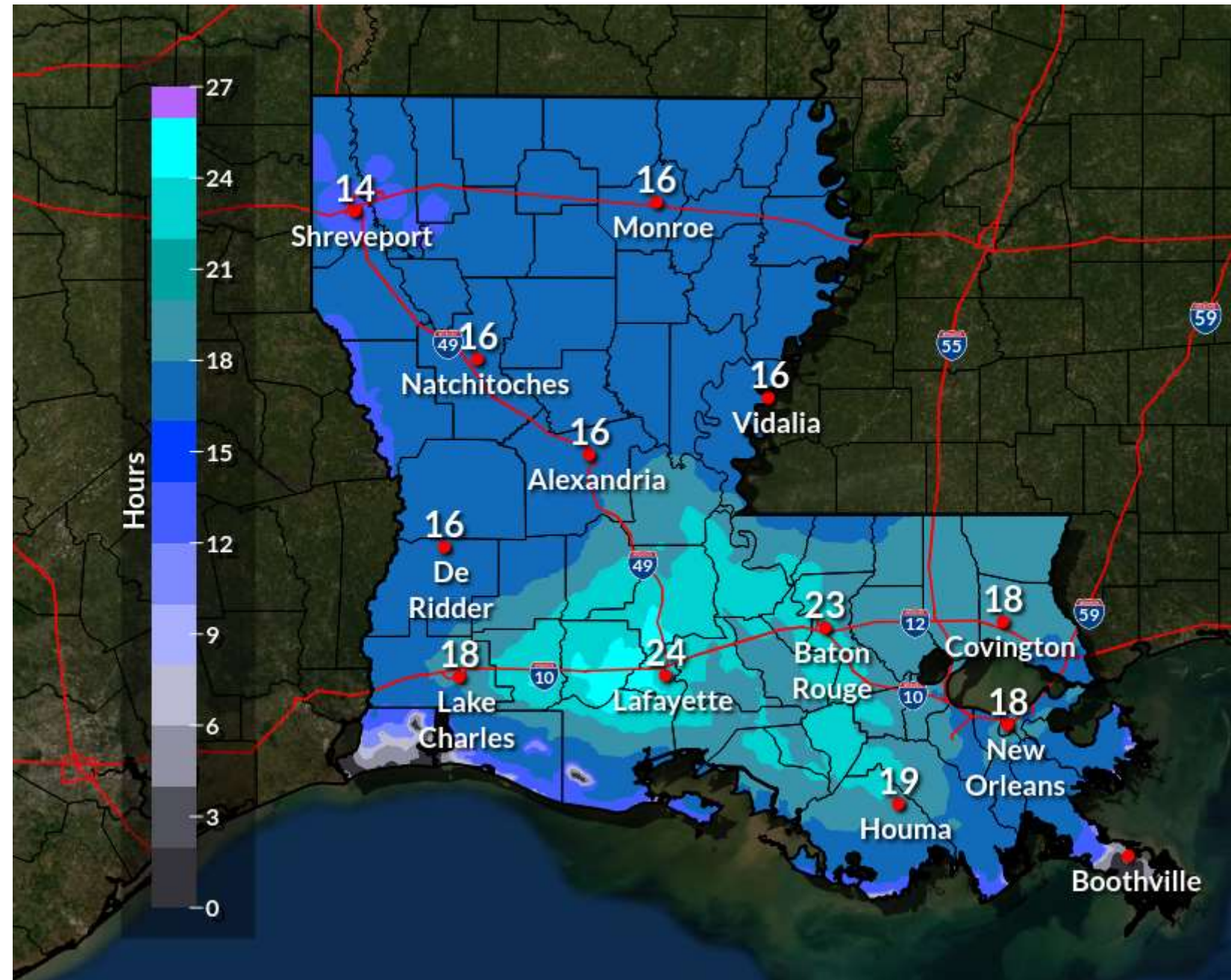
Hours Below Freezing

Valid 6pm to 6pm each day

Today noon – Thu 6pm

Thu 6pm – Fri 6pm

Fri 6pm – Sat 6pm



- From Noon today through tomorrow many locations will see 14 to 24 additional hours below freezing
- Temperatures should rise above freezing across most of the state late tomorrow morning with another moderate freeze expected Friday morning. 6 to 14 hours with the exception of the Southshore
- Temperatures will climb above freezing a little earlier but a light to moderate freeze. Another night with 6 to 12 hours of freezing conditions



Key Message Summary

Quick Review of Yesterday and This Morning:

- Widespread snow across south and central LA. Totals likely peaked out between 10 and 14 inches over portions of southwest LA and also southeast LA from New Orleans to Houma. Outside of those higher values 3 to 8 inches of snow reported across much of south LA. These snow totals likely only eclipsed by the 1895 snow event
- This morning historically cold with some of the coldest temperatures the state has seen in over 126 years, testing the record cold of 1899

Trends to Watch:

- How well snow and ice melts but it is looking like it will be a slow process today
- Overnight temperatures will remain cold to dangerously cold with tonight expected to be the coldest night over the next 3 nights (**NOT** colder than this morning but scattered to widespread teens expected across a large area of south LA)

Cold Temperatures:

- LONG duration freeze currently ongoing
- Temperatures will inch above freezing today but significant melting of snow or ice is not anticipated. Any melting will refreeze quickly overnight with temperatures expected to drop below freezing early this evening
- Areas that remain shaded will hold onto the snow and ice longer. This may include east bound outer lanes of I-10/12. Walkways that are shaded will be a hazard as well.
- Slight warming trend begins Friday, but moderate freeze is still expected Friday and Saturday morning