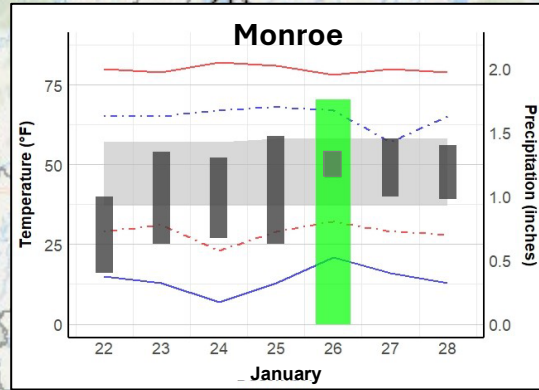
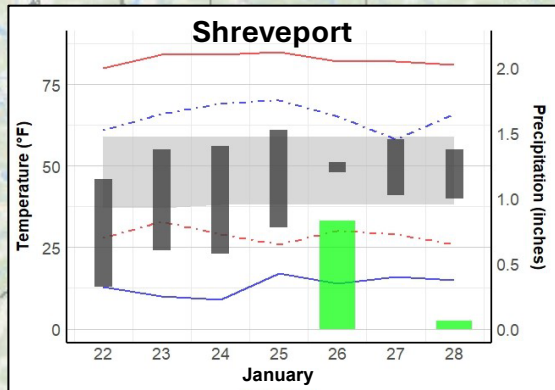




LOUISIANA WEEKLY CLIMATE SUMMARY

Volume 1, Issue 4

January 22 – 28, 2025



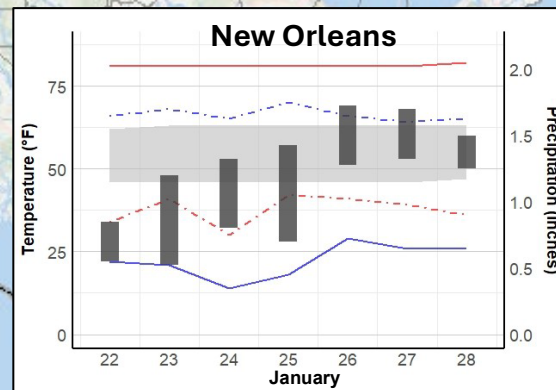
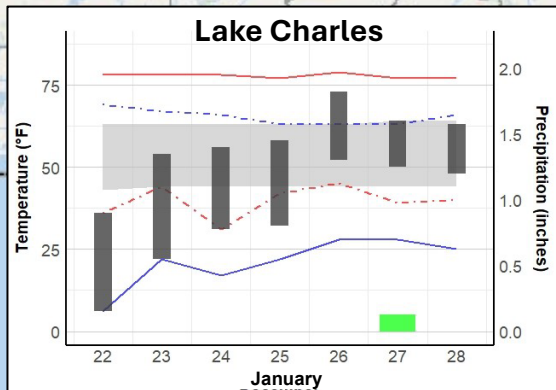
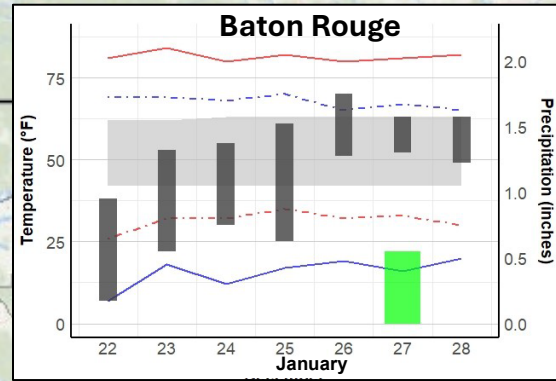
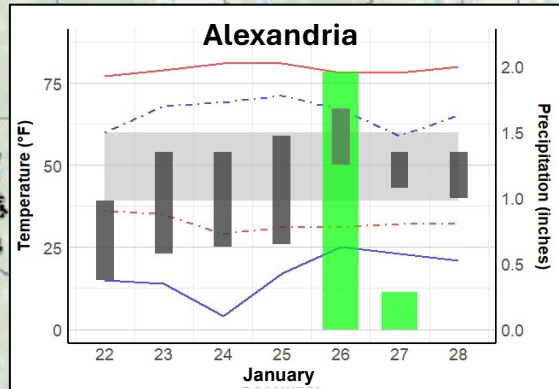
Daily Ranges

- Max/ Min Temps (Dark Gray Bar)
- Max/ Min Normal (Light Gray Bar)

Daily Extremes

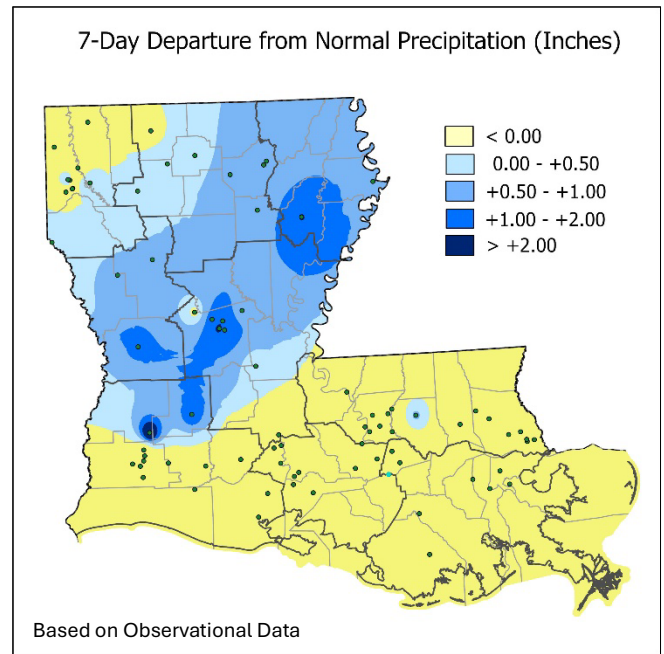
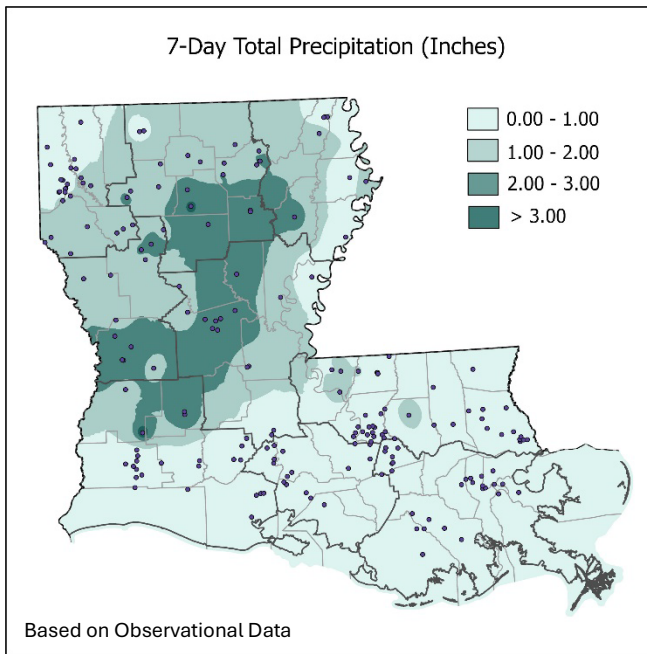
- Record High Max (Red Solid Line)
- Record High Min (Blue Dashed Line)
- Record Low Max (Red Dashed Line)
- Record Low Min (Blue Solid Line)

Rainfall (Green Bar)

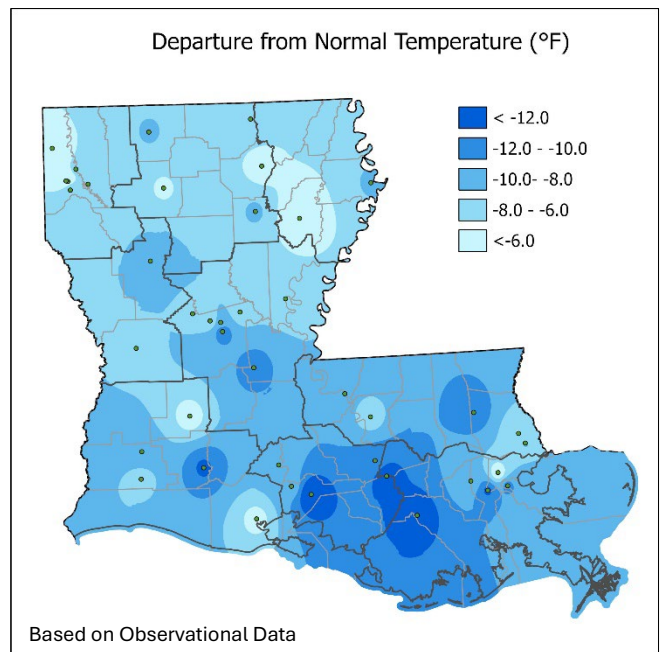
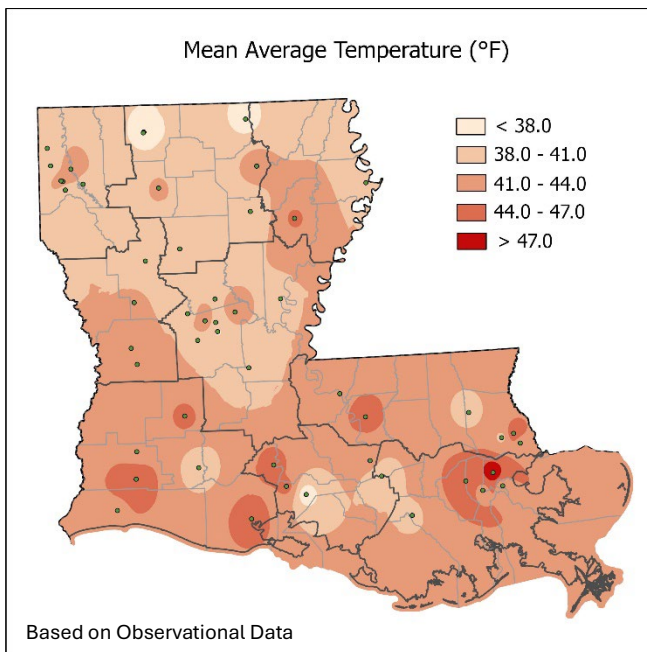


* PROVISIONAL DATA

7-Day Accumulated Rainfall & Average Temperatures: January 22 – 28, 2025



- a cold front delivered rain with occasional t-storms on Jan 26-27 to Louisiana
- rains of 1" to 3" were recorded over most of the northern half of the state, while most 7-day reported totals across southern Louisiana were under 1"



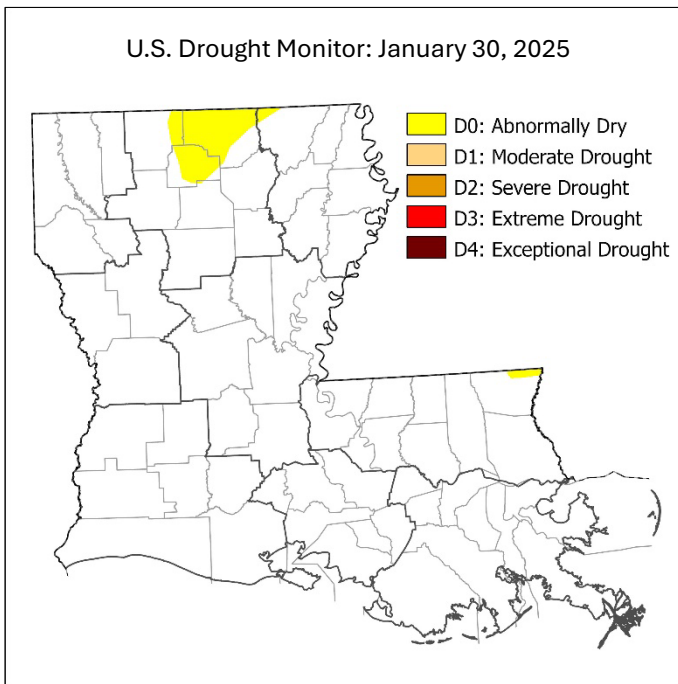
- the Arctic Blast that contributed to south Louisiana's major snow event also produced near-record to record lows across the state on the morning of January 22
- even with a modest warming trend, average temperatures over the 7 days were generally 3° to 6° below-normal

Table 1: Divisional and State Summary											
Divisions	Air Temperature							Precipitation			
	Avg Max	Highest Max	Avg Min	Lowest Min	7-Day Avg	7-Day Normal	7-Day DFN	7-day Total	1-day Max	Rain Days	7-Day DFN
Northwest	54.1	61	33.8	20	44.0	47.6	-3.0	0.98	1.03	4	+0.05
North Central	53.6	60	30.7	14	42.1	46.1	-4.0	1.54	2.10	3	+0.40
Northeast	53.8	60	33.2	21	43.5	47.6	-4.2	2.15	2.20	3	+1.02
West Central	53.9	72	33.7	16	43.8	49.1	-5.2	2.18	2.32	4	+0.98
Central	54.1	68	31.5	14	42.8	48.5	-5.9	2.06	3.00	3	+0.73
East Central	58.7	70	36.1	10	47.4	51.7	-4.3	0.38	1.24	2	-0.72
Southwest	57.8	73	37.5	9	47.6	51.5	-3.8	0.58	2.70	3	-0.47
South Central	58.2	70	36.8	13	47.5	52.9	-5.4	0.27	0.38	2	-0.80
Southeast	56.2	69	37.5	16	46.9	54.5	-7.6	0.28	1.25	2	-0.66
STATE	55.6	73	34.5	9	45.1	49.9	-4.8	1.16	3.00	4	+0.06

* DFN - Departure from Normal

"-" indicates data not available

"M" indicates missing observation(s)



USDM: Issued January 30, 2025

- includes data thru January 28

Although rainfall was below-average for most southern parishes, low evapotranspiration rates (ET) resulting from cool-to-cold weather and frequent cloud cover meant little change to the soil moisture status. For the northern half of the state, rainfall generally exceeded the 7-day ET demand. The Louisiana Drought Team (LDT) considered eliminating the lingering patch of D0 ("Abnormally Dry") in North Central Louisiana but retained it in conjunction with the perspective of the USDM national authors. However, based on the latest rainfall projections for the state, the LDT does expect to remove that area of D0 within the next week or two.

The data used in this report to produce maps are from the following sources:

Precipitation and Temperature: [ACIS QueryBuilder \(rcc-acis.org\)](https://rcc-acis.org/); cli-MATE: [MRCC Application Tools Environment](https://mrcc.org/)

Drought Intensity: [GIS Data | U.S. Drought Monitor \(unl.edu\)](https://gisdata.unl.edu/)

Table 2: Weekly Summary for Northwest Division											
STATIONS	Air Temperature							Precipitation			
	Avg Max	Highest Max	Avg Min	Lowest Min	7-Day Avg	7-Day Normal	7-Day DFN	7-day Total	1-day Max	Rain Days	7-Day DFN
BLANCHARD	53.0	58	28.4	20	40.7	-	-	0.93	0.88	2	-
KEITHVILLE	-	-	-	-	-	-	-	1.03	0.89	4	-0.03
LOGANSPOUT	-	-	-	-	-	-	-	1.23	1.03	3	+0.27
MOORINGSPOUT 1 N	53.7	57	35.7	26	44.7	46.4	-1.8	0.66	0.60	3	-0.16
PLAIN DEALING	-	-	-	-	-	-	-	0.69	0.42	3	-0.17
RED RIVER RES STA	52.3	58	35.4	22	43.9	46.8	-3.0	1.28	0.67	4	+0.21
SHREVEPORT AP	56.0	61	34.5	23	45.2	48.4	-3.1	0.89	0.83	2	+0.08
SHREVEPORT DTN AP	55.5	59	34.5	25	45.0	49.2	-4.2	0.74	0.68	2	-0.07
SHV-SOUTHERN HILLS	M	M	M	M	M	M	M	1.13	0.94	4	+0.04
SHREVEPORT WFO	54.2	59	34.5	25	44.3	47.4	-3.0	0.95	0.86	2	+0.25
TAYLORTOWN	-	-	-	-	-	-	-	1.20	1.02	4	-
Division	54.1	61	33.8	20	44.0	47.6	-3.0	0.98	1.03	4	+0.05

* DFN - Departure from Normal

"-" indicates data not available

"M" indicates missing observation(s)

Table 3: Weekly Summary for North Central Division											
STATIONS	Air Temperature							Precipitation			
	Avg Max	Highest Max	Avg Min	Lowest Min	7-Day Avg	7-Day Normal	7-Day DFN	7-day Total	1-day Max	Rain Days	7-Day DFN
ARCADIA	-	-	-	-	-	-	-	1.57	1.43	3	+0.46
BIENVILLE 3 NE	54.2	59	32.7	22	43.4	47.2	-3.8	1.57	1.47	3	+0.39
COLUMBIA LOCK	51.1	59	32.0	17	41.6	47.0	-5.4	2.11	2.10	2	+0.76
HOMER 1 N	52.7	59	27.6	14	40.1	44.3	-4.2	0.90	0.72	3	-0.25
JAMESTOWN	-	-	-	-	-	-	-	1.30	1.23	3	+0.21
MONROE 26 N	54.3	60	27.5	23	40.9	44.9	-4.0	M	M	M	M
MONROE MLU AP	55.5	59	33.7	25	44.6	47.2	-2.6	1.76	1.76	1	+0.80
Division	53.6	60	30.7	14	42.1	46.1	-4.0	1.54	2.10	3	+0.40

* DFN - Departure from Normal

"-" indicates data not available

"M" indicates missing observation(s)

Table 4: Weekly Summary for Northeast Division											
STATIONS	Air Temperature							Precipitation			
	Avg Max	Highest Max	Avg Min	Lowest Min	7-Day Avg	7-Day Normal	7-Day DFN	7-day Total	1-day Max	Rain Days	7-Day DFN
TALLULAH TVR AP	53.8	60	30.8	21	42.3	48.1	-5.7	2.04	1.72	2	+1.02
WINNSBORO 5 SSE	53.8	59	35.6	22	44.7	47.4	-2.8	2.26	2.20	3	M
Division	53.8	60	33.2	21	43.5	47.6	-4.2	2.15	2.20	3	+1.02

* DFN - Departure from Normal

"-" indicates data not available

"M" indicates missing observation(s)

Table 5: Weekly Summary for West Central Division											
STATIONS	Air Temperature							Precipitation			
	Avg Max	Highest Max	Avg Min	Lowest Min	7-Day Avg	7-Day Normal	7-Day DFN	7-day Total	1-day Max	Rain Days	7-Day DFN
LEESVILLE	56.7	72	34.3	16	45.5	49.2	-3.7	2.34	2.32	2	+1.06
NATCHITOCHES #2	51.1	57	33.1	20	42.1	49.0	-6.8	2.02	1.74	4	+0.89
Division	53.9	72	33.7	16	43.8	49.1	-5.2	2.18	2.32	4	+0.98

* DFN - Departure from Normal

"-" indicates data not available

"M" indicates missing observation(s)

Table 6: Weekly Summary for Central Division											
STATIONS	Air Temperature							Precipitation			
	Avg Max	Highest Max	Avg Min	Lowest Min	7-Day Avg	7-Day Normal	7-Day DFN	7-day Total	1-day Max	Rain Days	7-Day DFN
ALEXANDRIA	54.3	66	33.1	17	43.7	49.0	-5.3	2.93	2.83	2	+1.56
ALEXANDRIA 5 SSE	52.9	58	28.3	14	40.6	49.5	-8.9	2.25	2.25	1	+0.95
ALEXANDRIA ESF AP	57.3	67	32.5	21	44.9	48.7	-3.8	1.99	1.65	2	+0.87
BOYCE 3 WNW	51.0	61	34.0	24	42.5	47.9	-5.3	1.14	0.92	3	+0.03
BUNKIE	52.3	68	29.3	18	40.8	50.0	-9.1	1.55	1.55	1	+0.27
JONESVILLE LOCKS	56.7	64	31.9	18	44.3	47.5	-3.3	1.20	1.15	2	-0.37
MARKSVILLE	-	-	-	-	-	-	-	2.44	2.44	1	M
RED RIVER LOCK #1	-	-	-	-	-	-	-	3.00	3.00	1	+1.83
Division	54.1	68	31.5	14	42.8	48.5	-5.9	2.06	3.00	3	+0.73

* DFN - Departure from Normal

"-" indicates data not available

"M" indicates missing observation(s)

Table 7: Weekly Summary for East Central Division											
STATIONS	Air Temperature							Precipitation			
	Avg Max	Highest Max	Avg Min	Lowest Min	7-Day Avg	7-Day Normal	7-Day DFN	7-day Total	1-day Max	Rain Days	7-Day DFN
COVINGTON ABITA RVR	-	-	-	-	-	-	-	0.25	0.25	1	M
BR-METRO AP	60.8	70	38.2	22	49.5	52.4	-2.9	0.55	0.55	1	-0.60
LIVINGSTON	56.2	66	29.5	10	42.8	51.1	-8.2	0.25	0.21	2	-0.72
NEW ROADS 5 NE	-	-	-	-	-	-	-	0.45	0.41	2	-0.61
PONCHATOULA 4 E	59.5	68	37.7	23	48.6	52.0	-3.4	1.32	1.24	2	+0.13
PORT ALLEN	-	-	-	-	-	-	-	0.00	0.00	0	-1.23
SLIDELL	55.9	67	37.1	16	46.5	51.4	-4.9	0.23	0.12	2	-1.00
SLIDELL AP	61.0	68	37.8	22	49.4	51.7	-2.2	0.01	0.01	1	-0.99
Division	58.7	70	36.1	10	47.4	51.7	-4.3	0.38	1.24	2	-0.72

* DFN - Departure from Normal

"-" indicates data not available

"M" indicates missing observation(s)

Table 8: Weekly Summary for Southwest Division											
STATIONS	Air Temperature							Precipitation			
	Avg Max	Highest Max	Avg Min	Lowest Min	7-Day Avg	7-Day Normal	7-Day DFN	7-day Total	1-day Max	Rain Days	7-Day DFN
ABBEVILLE	-	-	-	-	-	-	-	0.03	0.03	1	M
CROWLEY 2 NE	-	-	-	-	-	51.4	-	0.36	0.36	1	-0.69
JENNINGS	53.3	70	34.4	9	43.9	51.2	-7.3	0.19	0.16	3	-1.05
LAKE CHARLES 2 N	-	-	-	-	-	-	-	0.42	0.35	2	-0.76
LAKE CHARLES PORT	-	-	-	-	-	-	-	0.31	0.31	1	-0.67
LAKE CHARLES LCH AP	61.3	73	39.2	22	50.2	53.6	-3.3	0.13	0.13	1	-0.82
LELAND BOWMAN LOCK	57.3	68	40.2	26	48.8	50.6	-1.8	0.06	0.06	1	-0.92
MOSS BLUFF	-	-	-	-	-	-	-	0.57	0.57	1	-0.75
MOSS BLUFF 2 NNW	57.7	68	36.0	19	46.8	52.2	-5.3	0.98	0.50	2	-0.11
OBERLIN FIRE TOWER	59.2	70	37.8	22	48.5	49.7	-1.1	2.70	2.70	1	1.58
Division	57.8	73	37.5	9	47.6	51.5	-3.8	0.58	2.70	3	-0.47

* DFN - Departure from Normal

"-" indicates data not available

"M" indicates missing observation(s)

Table 9: Weekly Summary for South Central Division											
STATIONS	Air Temperature							Precipitation			
	Avg Max	Highest Max	Avg Min	Lowest Min	7-Day Avg	7-Day Normal	7-Day DFN	7-day Total	1-day Max	Rain Days	7-Day DFN
BAYOU SORREL LOCK	-	-	-	-	-	-	-	0.30	0.30	1	M
CARENCRO	-	-	-	-	-	-	-	0.43	0.38	2	-0.72
CARVILLE 2 SW	58.3	67	35.7	23	47.0	52.8	-5.8	0.30	0.30	1	-0.65
DONALDSONVILLE 4 SW	54.4	69	33.9	13	44.1	52.2	-8.1	0.31	0.31	1	-0.82
LAFAYETTE LFT AP	60.0	70	39.0	20	49.5	53.3	-3.8	0.14	0.14	1	-0.89
NEW IBERIA ARA AP	60.0	69	38.5	20	49.2	53.3	-4.0	0.05	0.05	1	-0.84
PLAQUEMINE 2 N	-	-	-	-	-	-	-	0.38	0.34	2	-0.86
Division	58.2	70	36.8	13	47.5	52.9	-5.4	0.27	0.38	2	-0.80

* DFN - Departure from Normal

"-" indicates data not available

"M" indicates missing observation(s)

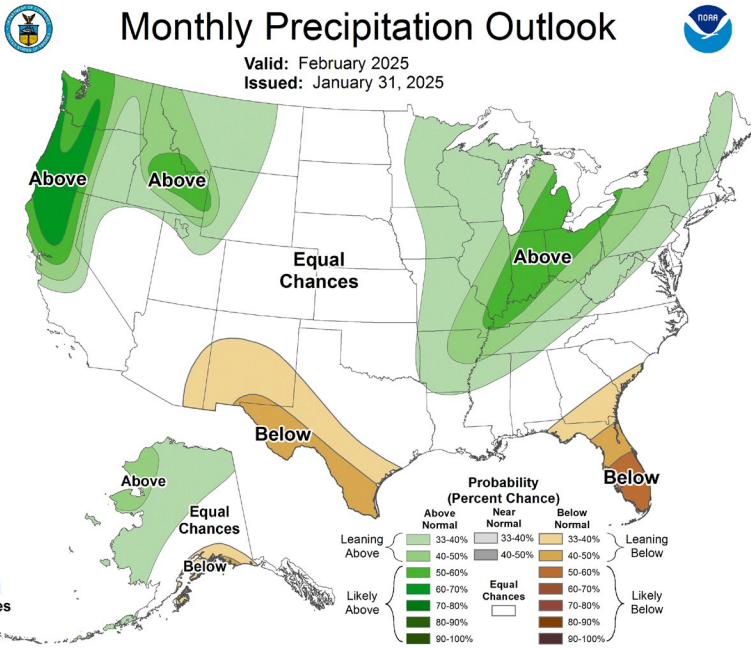
Table 10: Weekly Summary for Southeast Division											
STATIONS	Air Temperature							Precipitation			
	Avg Max	Highest Max	Avg Min	Lowest Min	7-Day Avg	7-Day Normal	7-Day DFN	7-day Total	1-day Max	Rain Days	7-Day DFN
CHALMETTE	54.2	68	35.2	20	44.7	53.0	-8.3	0.00	0.00	0	-1.00
DULAC 3 N	-	-	-	-	-	-	-	0.07	0.07	1	-0.78
DUTCHTOWN #2	-	-	-	-	-	-	-	0.84	0.50	2	-0.22
GONZALES	-	-	-	-	-	-	-	1.25	1.25	1	+0.25
NO-ARMSTRONG AP	59.2	69	39.2	21	49.2	54.7	-5.5	0.00	0.00	0	-0.88
NO-AUDUBON	56.5	68	35.0	20	45.8	55.8	-10.0	0.09	0.09	1	-0.76
NO-LAKEFRONT AP	56.8	69	44.3	36	50.6	54.4	-3.8	0.00	0.00	0	-0.90
THIBODAUX 4 SE	54.3	67	33.8	16	44.1	54.7	-10.5	0.00	0.00	0	-0.96
Division	56.2	69	37.5	16	46.9	54.5	-7.6	0.28	1.25	2	-0.66

* DFN - Departure from Normal

"-" indicates data not available

"M" indicates missing observation(s)

February 2025 Precipitation and Temperature Outlooks



This summary is based monthly (February) weather outlooks from the NWS Climate Prediction Center (CPC) based on assessments released 31 January 2025.

Remember: these outlooks express CPC's estimates for the probability of rainfall/temperatures being "significantly" above/below normal, averaged over the entire month. They do not provide insight regarding the possibility of singular winter-weather events such as brief excessive rainfall storms or short-term Arctic outbreaks. Nor do they offer guidance as to the overall magnitude of rainfall/temperature departures for the month.

CPC's latest February rainfall outlook indicates a slight leaning towards above-normal rainfall right along the La/AR border with no anticipated rainfall tendencies elsewhere across Louisiana. A "significant" rainfall departure-from-normal for February would be on the order of +/- 2" of rain for the month.

CPC's most recent February outlook indicates a leaning (40% to 50%) for monthly temperatures to average above-normal across southwestern, central, and northern Louisiana. At this time of year, a "significant" departure from near-normal conditions would mean average monthly temperatures running roughly 4° or more above normal. CPC proposes a likely (50% to 60%) probability that monthly temperatures across southeastern Louisiana will reach or exceed that departure.

