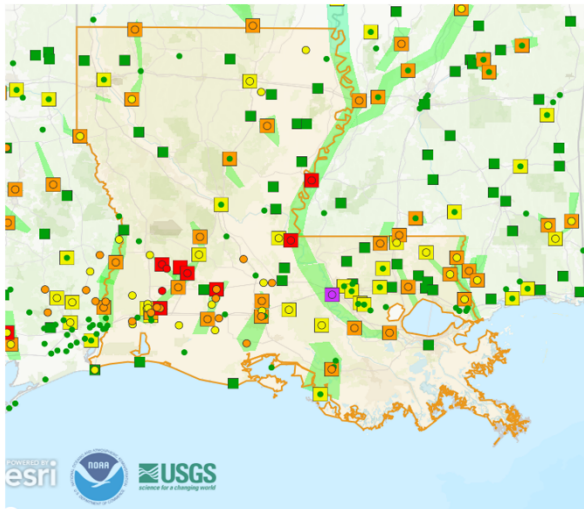


River Forecasts



Forecast Crest categories:

- Major flooding
- Moderate flooding
- Minor flooding
- Near flood stage
- No flooding

With the bulk of the rain having already fallen, river forecasts are now less likely to experience any more significant changes.

Last Updated: 5/8/2025 4:22 AM

National Weather Service – New Orleans/Baton Rouge

INCIDENT OVERVIEW

WebEOC Incident: 25-016 Severe Weather/Flooding - Statewide - May06

Activation Level: CAT – Level 4

State Declaration: N/A

INCIDENT OBJECTIVES

1. Ensure the safety of the public and first responders during the event
2. Maintain effective communication channels to disseminate information to the public, first responders, and emergency personnel involved
3. Ensure the availability and efficient use of resources

OPERATIONAL RHYTHM

Coordination Call/Intel Briefing: N/A
Parish and ESF SITREPs due in WebEOC: 1300
SITREP published: 1400

Trend Legend:	Lifeline Color Description:
↑ Improvement Noted	Green (GN) – Minor disruptions or limitations to the community
↓ Worsening Situation	Yellow (YL) – Disruptions affect delivery of services and resources
→ No Change	Red (RD) – Severe challenges and obstacles hindering essential services
	Grey (GR) – Unknown status

WEATHER

Today:

20% chance of showers and thunderstorms after 1500. Sunny, with a high near 84. Calm wind becoming northeast around 5mph.

Overnight:

Slight chance of showers and thunderstorms. Increasing clouds, with a low around 68. Calm wind. Chance of precipitation is 20%.

Tomorrow:

Showers and thunderstorms likely. Mostly cloudy, with a high near 79. Calm wind becoming north around 5mph in the afternoon. Chance of precipitation is 70%. Estimated rainfall amounts between a tenth and quarter of an inch.



Lifelines Summary			Lifelines Summary		
Safety/ Security	↓	<ul style="list-style-type: none"> See link for Information on Parish Emergency Declarations: https://virtual.la.gov/ See link for tracked school closures: https://virtual.la.gov/ 	Cyber/ Comms	↓	<ul style="list-style-type: none"> 150 out of 150 tower sites in wide-area operations 3 emergency tactical towers are ready for deployment
Energy	↓	<ul style="list-style-type: none"> See link for up-to-date state power outages: https://poweroutage.us/area/state/louisiana 	HazMat	↓	<p>LDEQ Update to Kansas City Southern Train Derailment in Avoyelles Parish:</p> <ul style="list-style-type: none"> Railway traffic has reopened as of 0830 3 damaged propylene cars were moved and secured last night at 2200 Propylene cars will remain at staging pad until transfer can be made No releases were observed from any railcars E3 continues remediation efforts in Mills Bayou
Health and Medical	↓	<p>LDH</p> <ul style="list-style-type: none"> Continuing to monitor the situation 			
Food, Hydration, Shelter	↓	<ul style="list-style-type: none"> Open shelters can be tracked here: https://virtual.la.gov/ <p>DCFS</p> <ul style="list-style-type: none"> All shelters closed, no requests for support from parishes <p>ARC</p> <ul style="list-style-type: none"> Coordinating with DCFS and local OEPs Shelter teams on standby through Thursday, 8 May 2025 PDA completed northern part of state identified 1 home destroyed, 17 with major damages, and 10 with minor damage Provided IA in the north for qualifying clients Provided clean-up kits and tarps as needed to clients with minor home damage 			
Water Systems	↓	<ul style="list-style-type: none"> See link for state water system outages and boil advisories: https://www.ldh.la.gov/bureau-of-engineering-services/safe-drinking-water-emergency-response 	Transportation	↓	<ul style="list-style-type: none"> See link for up-to-date road conditions and alerts: https://www.511la.org/#:Alerts Hwy 115 in Avoyelles Parish will remain closed for approx. 14 days due to Kansas City Southern Train Derailment