



Louisiana GOHSEP

EMERGENCY OPERATIONS CENTER SITUATION REPORT

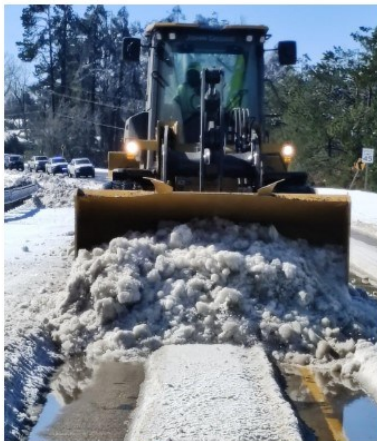
Situation Report
11

Incident Name
26-005 Winter Weather - Statewide - Jan2326

Date Prepared
01/28/2026

Operational Period
01/28/2026 08:00:00 - 01/28/2026 20:00:00

Incident Image/Map Sketch



Crews continue their ongoing efforts to clear roadways- Bayou D'Arbonne Bridge @ LA 143
Source: Louisiana Department of Transportation

Weather Forecast for Op Period

Temperatures will drop below freezing again tonight for just about the entire state. Thursday (29 JAN 2026) morning lows along the I-20 will dip into the mid 20°Fs with temps at/below freezing for 8 to 12 hours across the northern parishes. However, north Louisiana temps on Thursday (29 JAN 2026) afternoon will get into the 50°Fs and that should just about finish any lingering roadway snow and ice except where plows and shovels have created piles.

Most of the state stays above freezing for Thursday (29 JAN 2026) evening into Friday (30 JAN 2026) morning as we await the next strong Arctic front, currently scheduled for a Friday (30 JAN 2026) passage. Guidance has been bouncing around a bit with regard to the precipitation potential; however, even if we get a few showers or even some flakes, it won't add to the recent ice and snow dilemma.

North Louisiana temperatures will drop below 32°F on Friday evening (30 JAN 2026) and could stay at or below freezing for sections of north Louisiana until mid-day Sunday (1 JAN 2026). Plan for lows near 20°F along the I-20 for early Saturday (31 JAN 2026) morning with lows dipping into the 'teens for Sunday (1 FEB 2026) morning.

Sunday (1 FEB 2026) temperatures for the northern parishes will get above freezing but they won't stay there long. Lows for Monday's (2 FEB 2026) sunrise are currently forecasted to drop into the mid 20°Fs across the northern half of the state with freezing temperatures once again reaching the coastal parishes that morning.

INCIDENT

WebEOC Incident: 26-005 – Winter Weather – Statewide – Jan2326

Activation Level: Level 3

State Declaration of Emergency: JML 26-006

OPERATIONAL RHYTHM

Coordination Call/Intel Briefing: N/A

Parish and ESF SITREPs Due in WebEOC: 2000

SITREP published: 2100

INCIDENT OVERVIEW

We are rightsizing our operational posture starting 29 Jan 2026. ESFs and parish SITREPs are due in WebEOC at 1600. State SITREP will be published at 1800.

The Louisiana State Emergency Operations Center (SEOC) will remain at Level 3.

“Warmer” temperatures today dramatically improved the roadways, resulting in the clearing of I-20 allowing the accelerated movement of commodities to parishes. The short warmth won’t last and the freeze will delay water infrastructure restoration, but repairs are still occurring.

MREs and water are arriving to those parishes in need. Warming shelters are open across the regions to protect those who need support. Schools in the affected areas in North Louisiana will remain closed for precautionary reasons but are expected to reopen beginning of next week.

Lifelines Summary



Communications
GREEN



Energy
YELLOW



Food, Hydration, Shelter
GREEN



Hazardous Material
GREEN



Health and Medical
GREEN



Safety and Security
GREEN



Transportation
GREEN



Water Systems
YELLOW

Trend Legend:

↑ Improvement Noted

↓ Worsening Situation

→ No Change

Lifeline Color Description:

Green (GN) – Minor disruptions or limitations to the community

Yellow (YL) – Disruptions affect delivery of services and resources

Red (RD) – Severe challenges and obstacles hindering essential services

Grey (GR) – Unknown status

Communications



- 152/153 LWIN towers sites operational
- LWIN Current Site Status: 99% are in wide area operations
- 10 tower sites on Backup Power
 - Mansfield
 - Calhoun
 - Oak Grove
 - Transylvania
 - Jena
 - Tallulah
 - Arsene Lebleu
 - Merryville
 - Chopin
 - Ringgold
- Interop Channels in use: State Interop 1, Interop 3, Interop 4, Interop 5, Interop 6, Interop 7, Interop 8, Interop 10, LA GCI-2

Energy



Public Service Commission ESF-12

- For up-to-date power outages see: <https://lpsc.louisiana.gov/Outages/Map/bh7>
- Statewide power outages as of 1800 on 28 JAN 2026 were: 68,988

Logistics ESF-7

- FEMA Generators on the ground at Camp Minden
- Generators deployed - 15

Parish

- Winn Parish - The Village of Sikes continues to be on generator power

Food, Hydration, Shelter



LDH ESF-6

- Warming Centers can be tracked here: [Louisiana Warming Centers](#)

Shelter Population Update as of 1800 28 JAN 2026

- 3 Total Shelters
- 2 ARC - Population = 2
- 1 Parish = 58
- Total Population = 60

Shelters Locations:

- Stonewall Community Center 5208 LA-3276, Stonewall, LA 71078 (DeSoto Parish)
- Dupuis Recreation Center 1212 East Pont Des Mouton, Lafayette LA 70501 (Lafayette Parish)
- General Trass High School 702 Martin Luther King Dr, Lake Providence, LA 71254 (East Carroll)

ARC ESF-6

- Feeding plan has been established for East and West Carroll Parishes to begin 29 JAN 2026 and extend through 1 FEB 2026; 630 meals for lunch and dinner will be provided daily

LWC ESF-6

- The team is coordinating assistance relative to requests for meals from East Carroll Parish and West Carroll Parish.

Logistics ESF-7 (Update as of 1854 28 JAN 2026)

- MREs/Water on the ground at Camp Minden
- MREs Issued - 31,104
- Water Issued - 95,400 L

Hazardous Material



- Nothing significant to report

Health and Medical



LDH ESF-8

- The Sabine Coroner has confirmed 1 death due to hypothermia related to winter

weather. After further investigation a previous confirmed death in Sabine has been reclassified to not be winter storm related. The total number of winter storm related deaths is 8.

- On generator power:
 - Hospitals: 4
 - Nursing Homes: 3
 - Assisted Livings: 0
 - Intermediate Care Facilities: 9
- Water disruptions:
 - Hospitals: 5
 - Nursing Homes: 2
- Evacuations (total for whole event): All have moved into sister/parent facilities
 - Hospitals: 1
 - Assisted Livings: 1
 - Intermediate Care Facilities: 7
- In coordination with dialysis providers, most clinics are back operational; a few reported delayed starts 28 JAN and 29 JAN; continuing to see a few reports of patients getting to treatment – local DRCs are coordinating
- Coordinated with EMS providers in north Louisiana to provide oxygen cylinder regulators for St. Francis Medical Center

Safety and Security



- Parish Emergency Declarations see: [Parish Emergency Declarations Dashboard](#)
- School Closures see: [School Closures Dashboard](#)

LDWF ESF-9

- Agents concluded essential worker transport for Louisiana Department of Veteran Affairs (LDVA) in the morning. A total of 5 transports were conducted
- Agents performed 3 public assists around the LDWF Region 1 and Region 2 areas; Most assists consisted of helping stranded motorists get their vehicles back onto the roadway and traffic control
- Public Assists: 71
SAR: 4
LDVA/Hospital Assists: 205

LSP ESF-13

- Troop F continues to operate with double-shifts
- LSP Transportation Safety Services (TSS) units continue to assist with critical-need escorts, and convoys to partner agencies
- LSP Air Support Unit (ASU) resumed normal operations, and remains available for mission requests
- Troops F and G ended Critical Incident Management Staff (CIMS) Troop Liaison operations at 1700hrs

- LSP EOC plans to deactivate on 29 JAN 2026 at 1800hrs

LANG ESF-16

- LANG closed the Red Cross transportation of 50 COTS and 80 blankets to East Carroll mission
- LANG mission for 270KW Generator from Camp Minden RSA to General Trass High School (Lake Providence) is pending recovery; once generators are no longer required the mission will be closed out
- LNOs assigned to Ouachita, East Carroll, West Carroll, Madison, and Richland are still in place
- LANG continues to stage 10 drive teams in support of ESF-7 located at the LSA at Camp Minden

Transportation



- DOTD recommends drivers avoid I-20 if at all possible due to severe congestion arising from hazardous road conditions, this alert will expire 28 JAN 2028 at 1000
- Districts are actively conducting de-icing and road clearing operations with all available resources
- Non-activated districts are providing resources and support
- District crews are coordinating with and assisting power companies with clearing operations in order to support power restoration
- 511 Traveler Information: Travelers can find information regarding road closures by downloading the Louisiana 511 mobile app or by visiting the 511 Traveler Information website at <https://www.511la.org>; This website offers updates in real time, along with access to our livestream traffic cameras
- MyDOTD: Motorists can receive up-to-date information on local projects, lane and road closures, and other DOTD activity by signing up via email for MyDOTD at <https://www.dotd.la.gov>

Aviation

- All major airports are open, but some flights may be delayed or cancelled depending on weather conditions at other airports
- Travelers should contact the airlines for the latest updates

Parish

- SporTran has suspended all fixed-route bus and on demand service until further notice to ensure the safety of riders and operators

Water Systems



Boil Advisory/Water Outage/Cleared Reports will also be posted on our website at:
[water outages and boil advisories](#)

OPH ESF-12

- As of 1630 28 JAN 2026:
 - Systems on a Water Outage: 12
 - Systems on Boil Water Advisory: 69
 - Cleared Systems: 2

PARISH CLOSURES

Thursday, 29 JAN 2026

REGION 6

Catahoula

- Parish schools closed 29 JAN and 30 JAN 2026

Natchitoches

- Lakeview Public school closed 29 JAN 2026
- Louisiana School for Math, Science, and The Arts (LSMSA)
Campus closed set to reopen 1500 1 FEB 2026

Winn

- Parish schools closed 29 JAN through 30 JAN 2026
- Parish offices closed 29 JAN 2026

REGION 7

Bienville

- Parish schools closed 29 JAN 2026
- Parish offices closed 29 JAN 2026

Bossier

- Parish schools closed 29 JAN 2026
- Bossier Parish Parks and Recreation announce temporary closure of all parish parks due to severe weather

Caddo

- Parish schools closed 29 JAN 2026

Claiborne

- Parish schools closed 29 JAN 2026
- Parish offices closed 29 JAN 2026

DeSoto

- Parish schools closed 29 JAN 2026

- Parish offices closed 29 JAN 2026

Red River

- Parish schools closed 29 JAN and 30 JAN 2026
- Parish offices late start 29 JAN 2026

Webster

- Parish schools closed on 29 Jan 2026
- Parish offices closed 29 JAN 2026

REGION 8

Caldwell

- Parish schools closed 29 JAN 2026
- Parish offices closed 29 JAN 2026

East Carroll

- Parish schools closed through 30 JAN 2026
- Parish offices closed 29 JAN 2026

Franklin

- Parish schools closed through 30 Jan 2026
- Parish offices closed 29 JAN 2026

Jackson

- Parish schools closed through 30 JAN 2026
- Parish offices closed 29 JAN 2026

Lincoln

- Parish public, charter and private schools closed 29 JAN 2026
- Higher Education closed 29 JAN 2026: Louisiana Tech University
- Higher Education closed through 30 JAN 2026: Grambling State University
- Louisiana Center for the Blind closed 29 JAN 2026
- Parish offices closed 29 JAN 2026

Madison

- Parish schools virtual through 30 JAN 2026
- Private schools closed through 30 JAN 2026

- Parish offices closed 29 JAN 2026

Morehouse

- Parish schools and Beekman Charter closed through 30 JAN 2026
- Parish offices closed 29 JAN 2026

Ouachita

- Parish and private schools closed through 30 JAN 2026
- Higher Education closed through 30 JAN 2026: University of Louisiana Monroe, Louisiana Delta Community College
- Parish offices closed 29 JAN 2026

Richland

- Parish schools closed through 30 JAN 2026
- Parish offices closed 29 JAN 2026

Tensas

- Parish schools closed through 30 JAN 2026
- Parish offices closed 29 JAN 2026

Union

- Parish schools, Union Christian Academy and Downsville Community Charter are virtual through 30 JAN 2026
- D'Arbonne Woods Charter Virtual through 30 JAN 2026
- Parish offices closed 29 JAN 2026

West Carroll

- Parish schools closed 29 JAN 2026